

# SOX30 antibody - middle region

Rabbit Polyclonal Antibody

Catalog # AI10327

## Product Information

---

Application	WB
Primary Accession	<a href="#">O94993</a>
Other Accession	<a href="#">NM_178424</a> , <a href="#">NP_848511</a>
Reactivity	Human, Mouse, Rat, Pig, Dog, Bovine, Yeast
Predicted	Human, Mouse, Rat, Pig, Chicken, Dog, Bovine
Host	Rabbit
Clonality	Polyclonal
Calculated MW	81854

## Additional Information

---

Gene ID	11063
Other Names	Transcription factor SOX-30, SOX30
Format	Liquid. Purified antibody supplied in 1x PBS buffer with 0.09% (w/v) sodium azide and 2% sucrose.
Reconstitution & Storage	Add 50 ul of distilled water. Final anti-SOX30 antibody concentration is 1 mg/ml in PBS buffer with 2% sucrose. For longer periods of storage, store at 20°C. Avoid repeat freeze-thaw cycles.
Precautions	SOX30 antibody - middle region is for research use only and not for use in diagnostic or therapeutic procedures.

## Protein Information

---

Name	SOX30
Function	Acts both as a transcriptional activator and a repressor (PubMed: <a href="#">10359848</a> , PubMed: <a href="#">29739711</a> ). Binds to the DNA sequence 5'-ACAAT- 3' and shows a preference for guanine residues surrounding this core motif (PubMed: <a href="#">10359848</a> ). Binds to its own promoter and activates its own transcription (By similarity). Required to activate the expression of postmeiotic genes involved in spermiogenesis (By similarity). Binds to the promoter region of CTNNB1 and represses its transcription which leads to inhibition of Wnt signaling (PubMed: <a href="#">29739711</a> ). Also inhibits Wnt signaling by binding to the CTNNB1 protein, preventing interaction of CTNNB1 with TCF7L2/TCF4 (PubMed: <a href="#">29739711</a> ).
Cellular Location	Nucleus. Cytoplasm Note=Enriched at the chromocenter.

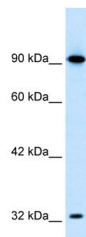
## References

---

Osaki,E., et al., (1999) *Acids Res.* 27 (12), 2503-2510  
Reconstitution and Storage: For short term use, store at 2-8C up to 1 week. For long term storage, store at -20C in small aliquots to prevent freeze-thaw cycles.

## Images

---



WB Suggested Anti-SOX3 Antibody Titration: .2-1 ug/ml  
ELISA Titer: 1:3125  
Positive Control: HepG2 cell lysate

Please note: All products are 'FOR RESEARCH USE ONLY. NOT FOR USE IN DIAGNOSTIC OR THERAPEUTIC PROCEDURES'.