

Tank antibody - N-terminal region

Rabbit Polyclonal Antibody

Catalog # AI10335

Product Information

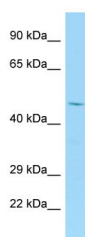
Application	WB
Primary Accession	Q8VDA2
Other Accession	NM_145788 , NP_665731
Reactivity	Human, Mouse, Rat, Zebrafish, Pig, Dog, Bovine
Predicted	Human, Mouse, Rat, Zebrafish, Pig, Dog, Bovine
Host	Rabbit
Clonality	Polyclonal
Calculated MW	45 KDa

Additional Information

Format	Liquid. Purified antibody supplied in 1x PBS buffer with 0.09% (w/v) sodium azide and 2% sucrose.
Reconstitution & Storage	Add 50 ul of distilled water. Final anti-Tank antibody concentration is 1 mg/ml in PBS buffer with 2% sucrose. For longer periods of storage, store at 20°C. Avoid repeat freeze-thaw cycles.
Precautions	Tank antibody - N-terminal region is for research use only and not for use in diagnostic or therapeutic procedures.

Protein Information

Images



Host: Rabbit
Target Name: Tank
Antibody Dilution: 1.ug/ml
Sample Tissue: Rat Stomach

Please note: All products are 'FOR RESEARCH USE ONLY. NOT FOR USE IN DIAGNOSTIC OR THERAPEUTIC PROCEDURES'.