

SCMH1 antibody - middle region

Rabbit Polyclonal Antibody

Catalog # AI10341

Product Information

Application	WB
Primary Accession	Q96GD3-4
Other Accession	NM_012236 , NP_036368
Reactivity	Human, Mouse, Rat, Zebrafish, Dog, Bovine, Yeast
Predicted	Human, Mouse, Rat, Zebrafish, Chicken, Dog, Bovine
Host	Rabbit
Clonality	Polyclonal
Calculated MW	65 KDa

Additional Information

Alias Symbol	Scml3
Format	Liquid. Purified antibody supplied in 1x PBS buffer with 0.09% (w/v) sodium azide and 2% sucrose.
Reconstitution & Storage	Add 50 ul of distilled water. Final anti-SCMH1 antibody concentration is 1 mg/ml in PBS buffer with 2% sucrose. For longer periods of storage, store at 20°C. Avoid repeat freeze-thaw cycles.
Precautions	SCMH1 antibody - middle region is for research use only and not for use in diagnostic or therapeutic procedures.

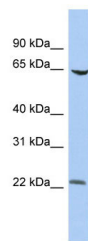
Protein Information

References

Olsen,J.V., (2006) Cell 127 (3), 635-648 Reconstitution and Storage:For short term use, store at 2-8C up to 1 week. For long term storage, store at -20C in small aliquots to prevent freeze-thaw cycles.

Images

WB Suggested Anti-SCMH1 Antibody Titration: .2-1 ug/ml
ELISA Titer: 1:625
Positive Control: HT18 cell lysate



Please note: All products are 'FOR RESEARCH USE ONLY. NOT FOR USE IN DIAGNOSTIC OR THERAPEUTIC PROCEDURES'.