

POU1F1 antibody - middle region

Rabbit Polyclonal Antibody
Catalog # AI10342

Product Information

Application	WB
Primary Accession	P28069
Other Accession	NM_000306 , NP_000297
Reactivity	Human, Mouse, Rat, Pig, Dog, Bovine
Predicted	Human, Mouse, Rat, Pig, Chicken, Bovine
Host	Rabbit
Clonality	Polyclonal
Calculated MW	32912

Additional Information

Gene ID	5449
Alias Symbol Other Names	GHF-1, PIT1, Pit-1, Pit-1 beta, CPHD1, POU1F1a Pituitary-specific positive transcription factor 1, PIT-1, Growth hormone factor 1, GHF-1, POU1F1, GHF1, PIT1
Format	Liquid. Purified antibody supplied in 1x PBS buffer with 0.09% (w/v) sodium azide and 2% sucrose.
Reconstitution & Storage	Add 50 ul of distilled water. Final anti-POU1F1 antibody concentration is 1 mg/ml in PBS buffer with 2% sucrose. For longer periods of storage, store at 20°C. Avoid repeat freeze-thaw cycles.
Precautions	POU1F1 antibody - middle region is for research use only and not for use in diagnostic or therapeutic procedures.

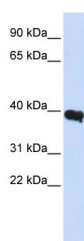
Protein Information

Name	POU1F1
Synonyms	GHF1, PIT1
Function	Transcription factor involved in the specification of the lactotrope, somatotrope, and thyrotrope phenotypes in the developing anterior pituitary. Specifically binds to the consensus sequence 5'- TAAAT-3'. Activates growth hormone and prolactin genes (PubMed: 22010633 , PubMed: 26612202).
Cellular Location	Nucleus.

References

Nakamura,T., (2008) Am. J. Hum. Genet. 82 (6), 1270-1280 Reconstitution and Storage:For short term use, store at 2-8C up to 1 week. For long term storage, store at -20C in small aliquots to prevent freeze-thaw cycles.

Images



WB Suggested Anti-POU1F1 Antibody Titration: .2-1
ug/ml
ELISA Titer: 1:3125
Positive Control: Human Liver

Please note: All products are 'FOR RESEARCH USE ONLY. NOT FOR USE IN DIAGNOSTIC OR THERAPEUTIC PROCEDURES'.