

# HNF1B antibody - N-terminal region

Rabbit Polyclonal Antibody

Catalog # AI10343

## Product Information

<b>Application</b>	WB
<b>Primary Accession</b>	<a href="#">P35680</a>
<b>Other Accession</b>	<a href="#">NM_006481</a> , <a href="#">NP_006472</a>
<b>Reactivity</b>	Human, Mouse, Rat, Zebrafish, Dog, Bovine
<b>Predicted</b>	Human, Mouse, Rat, Zebrafish, Pig, Chicken, Dog, Bovine
<b>Host</b>	Rabbit
<b>Clonality</b>	Polyclonal
<b>Calculated MW</b>	61324

## Additional Information

<b>Gene ID</b>	6928
<b>Alias Symbol</b>	FJHN, HNF1beta, HNF2, LFB3, MODY5, TCF2, VHNF1, HPC11, LF-B3
<b>Other Names</b>	Hepatocyte nuclear factor 1-beta, HNF-1-beta, HNF-1B, Homeoprotein LFB3, Transcription factor 2, TCF-2, Variant hepatic nuclear factor 1, vHNF1, HNF1B, TCF2
<b>Format</b>	Liquid. Purified antibody supplied in 1x PBS buffer with 0.09% (w/v) sodium azide and 2% sucrose.
<b>Reconstitution &amp; Storage</b>	Add 100 ul of distilled water. Final anti-HNF1B antibody concentration is 1 mg/ml in PBS buffer with 2% sucrose. For longer periods of storage, store at 20°C. Avoid repeat freeze-thaw cycles.
<b>Precautions</b>	HNF1B antibody - N-terminal region is for research use only and not for use in diagnostic or therapeutic procedures.

## Protein Information

<b>Name</b>	HNF1B
<b>Synonyms</b>	TCF2
<b>Function</b>	Transcription factor that binds to the inverted palindrome 5'-GTTAATNATTAAC-3' (PubMed: <a href="#">17924661</a> , PubMed: <a href="#">7900999</a> ). Binds to the FPC element in the cAMP regulatory unit of the PLAU gene (By similarity). Transcriptional activity is increased by coactivator PCBD1 (PubMed: <a href="#">24204001</a> ).
<b>Cellular Location</b>	Nucleus.

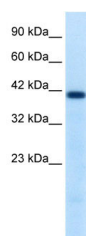
## References

---

Wu,G., et al., (2004) J.Biochem.271(18),3715-3728 Reconstitution and Storage: For short term use, store at 2-8C up to 1 week. For long term storage, store at -20C in small aliquots to prevent freeze-thaw cycles.

## Images

---



WB Suggested Antibody Titration: .2-1 ug/ml  
Positive Control: Jurkat

Please note: All products are 'FOR RESEARCH USE ONLY. NOT FOR USE IN DIAGNOSTIC OR THERAPEUTIC PROCEDURES'.