

LHX3 antibody - middle region

Rabbit Polyclonal Antibody

Catalog # AI10363

Product Information

Application	WB
Primary Accession	Q9UBR4
Other Accession	NM_178138 , NP_835258
Reactivity	Human, Mouse, Rat, Zebrafish, Pig, Dog, Bovine
Predicted	Human, Mouse, Rat, Zebrafish, Pig, Chicken, Dog, Bovine
Host	Rabbit
Clonality	Polyclonal
Calculated MW	43358

Additional Information

Gene ID	8022
Alias Symbol	DKFZp762A2013, M2-LHX3, LIM3, CPHD3
Other Names	LIM/homeobox protein Lhx3, LIM homeobox protein 3, LHX3
Format	Liquid. Purified antibody supplied in 1x PBS buffer with 0.09% (w/v) sodium azide and 2% sucrose.
Reconstitution & Storage	Add 50 ul of distilled water. Final anti-LHX3 antibody concentration is 1 mg/ml in PBS buffer with 2% sucrose. For longer periods of storage, store at 20°C. Avoid repeat freeze-thaw cycles.
Precautions	LHX3 antibody - middle region is for research use only and not for use in diagnostic or therapeutic procedures.

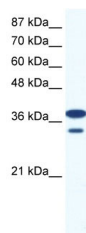
Protein Information

Name	LHX3
Function	Transcription factor. Recognizes and binds to the consensus sequence motif 5'-AATTAATTA-3' in the regulatory elements of target genes, such as glycoprotein hormones alpha chain CGA and visual system homeobox CHX10, positively modulating transcription; transcription can be co-activated by LDB2. Synergistically enhances transcription from the prolactin promoter in cooperation with POU1F1/Pit-1 (By similarity). Required for the establishment of the specialized cells of the pituitary gland and the nervous system (PubMed: 21149718). Involved in the development of interneurons and motor neurons in cooperation with LDB1 and ISL1 (By similarity).
Cellular Location	Nucleus.

References

Yaden, B.C., et al., (2006) Endocrinology 147 (1), 324-337
Reconstitution and Storage: For short term use, store at 2-8°C up to 1 week. For long term storage, store at -20°C in small aliquots to prevent freeze-thaw cycles.

Images



WB Suggested Anti-LHX3 Antibody Titration: .2-1 ug/ml
ELISA Titer: 1:3125
Positive Control: Jurkat cell lysate

Please note: All products are 'FOR RESEARCH USE ONLY. NOT FOR USE IN DIAGNOSTIC OR THERAPEUTIC PROCEDURES'.