

# PAX3 antibody - N-terminal region

Rabbit Polyclonal Antibody

Catalog # AI10364

## Product Information

<b>Application</b>	WB
<b>Primary Accession</b>	<a href="#">Q494Z3</a>
<b>Other Accession</b>	<a href="#">NM_181458</a> , <a href="#">NP_852123</a>
<b>Reactivity</b>	Human, Mouse, Rat, Pig, Dog, Bovine, Yeast
<b>Predicted</b>	Human, Mouse, Rat, Pig, Chicken, Dog, Bovine
<b>Host</b>	Rabbit
<b>Clonality</b>	Polyclonal
<b>Calculated MW</b>	53 KDa

## Additional Information

<b>Alias Symbol</b>	CDHS, HUP2, MGC120381, MGC120382, MGC120383, MGC120384, MGC134778, WS1, WS3
<b>Format</b>	Liquid. Purified antibody supplied in 1x PBS buffer with 0.09% (w/v) sodium azide and 2% sucrose.
<b>Reconstitution &amp; Storage</b>	Add 50 ul of distilled water. Final anti-PAX3 antibody concentration is 1 mg/ml in PBS buffer with 2% sucrose. For longer periods of storage, store at 20°C. Avoid repeat freeze-thaw cycles.
<b>Precautions</b>	PAX3 antibody - N-terminal region is for research use only and not for use in diagnostic or therapeutic procedures.

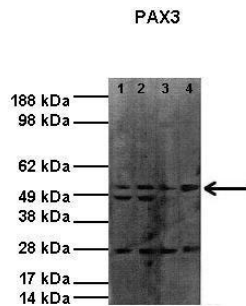
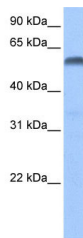
## Protein Information

## References

Mercado,G.E., (2008) Genes Chromosomes Cancer 47 (6), 510-520 Reconstitution and Storage:For short term use, store at 2-8C up to 1 week. For long term storage, store at -20C in small aliquots to prevent freeze-thaw cycles.

## Images

WB Suggested Anti-PAX3 Antibody Titration: .2-1 ug/ml  
Positive Control: Hela cell lysate



See Immunoblot 2 Data and Customer Feedback for more information

Lanes:

Lane1: 2ug RH3 lysate

Lane2: 2ug RH3 lysate

Lane3: 2ug RH41 lysate

Lane4: 2ug RH41 lysate

Primary Antibody Dilution:

1:1

Secondary Antibody:

Donkey anti-rabbit HRP

Secondary Antibody Dilution:

1:4

Gene Name:

PAX3

Submitted by:

Dr Joanna Selfe, Institute of Cancer Research

Please note: All products are 'FOR RESEARCH USE ONLY. NOT FOR USE IN DIAGNOSTIC OR THERAPEUTIC PROCEDURES'.