

# PATZ1 antibody - N-terminal region

Rabbit Polyclonal Antibody

Catalog # AI10374

## Product Information

---

<b>Application</b>	WB
<b>Primary Accession</b>	<a href="#">Q9HBE1</a>
<b>Other Accession</b>	<a href="#">NM_014323</a> , <a href="#">NP_055138</a>
<b>Reactivity</b>	Human, Mouse, Rat, Dog, Bovine
<b>Predicted</b>	Human, Mouse, Pig, Dog, Bovine
<b>Host</b>	Rabbit
<b>Clonality</b>	Polyclonal
<b>Calculated MW</b>	74060

## Additional Information

---

<b>Gene ID</b>	23598
<b>Alias Symbol</b> <b>Other Names</b>	MAZR, PATZ, RIAZ, ZBTB19, ZNF278, ZSG, dj400N23 POZ-, AT hook-, and zinc finger-containing protein 1, BTB/POZ domain zinc finger transcription factor, Protein kinase A RI subunit alpha-associated protein, Zinc finger and BTB domain-containing protein 19, Zinc finger protein 278, Zinc finger sarcoma gene protein, PATZ1, PATZ, RIAZ, ZBTB19, ZNF278, ZSG
<b>Format</b>	Liquid. Purified antibody supplied in 1x PBS buffer with 0.09% (w/v) sodium azide and 2% sucrose.
<b>Reconstitution &amp; Storage</b>	Add 50 ul of distilled water. Final anti-PATZ1 antibody concentration is 1 mg/ml in PBS buffer with 2% sucrose. For longer periods of storage, store at 20°C. Avoid repeat freeze-thaw cycles.
<b>Precautions</b>	PATZ1 antibody - N-terminal region is for research use only and not for use in diagnostic or therapeutic procedures.

## Protein Information

---

<b>Name</b>	PATZ1
<b>Synonyms</b>	PATZ, RIAZ, ZBTB19, ZNF278, ZSG
<b>Function</b>	Transcriptional regulator that plays a role in many biological processes such as embryogenesis, senescence, T-cell development or neurogenesis (PubMed: <a href="#">10713105</a> , PubMed: <a href="#">25755280</a> , PubMed: <a href="#">31875552</a> ). Interacts with the TP53 protein to control genes that are important in proliferation and in the DNA-damage response. Mechanistically, the interaction inhibits the DNA

binding and transcriptional activity of TP53/p53 (PubMed:[25755280](#)). Part of the transcriptional network modulating regulatory T-cell development and controls the generation of the regulatory T-cell pool under homeostatic conditions (PubMed:[31875552](#)).

<b>Cellular Location</b>	Nucleus.
<b>Tissue Location</b>	Ubiquitous.

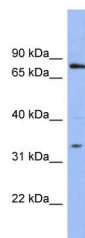
## References

---

Fedele, M., (2008) J. Pathol. 215 (1), 39-47 Reconstitution and Storage: For short term use, store at 2-8°C up to 1 week. For long term storage, store at -20°C in small aliquots to prevent freeze-thaw cycles.

## Images

---



WB Suggested Anti-PATZ1 Antibody Titration: .2-1 µg/ml  
ELISA Titer: 1:3125  
Positive Control: OVCAR-3 cell lysate

Please note: All products are 'FOR RESEARCH USE ONLY. NOT FOR USE IN DIAGNOSTIC OR THERAPEUTIC PROCEDURES'.