

HMX1 antibody - middle region

Rabbit Polyclonal Antibody

Catalog # AI10390

Product Information

Application	WB
Primary Accession	Q9NP08
Other Accession	NM_018942 , NP_061815
Reactivity	Human, Mouse, Rat, Zebrafish, Pig, Dog, Bovine
Predicted	Human, Mouse, Rat, Zebrafish, Pig, Chicken, Dog, Bovine
Host	Rabbit
Clonality	Polyclonal
Calculated MW	36155

Additional Information

Gene ID	3166
Alias Symbol	H6, NKX5-3
Other Names	Homeobox protein HMX1, Homeobox protein H6, HMX1, H6
Format	Liquid. Purified antibody supplied in 1x PBS buffer with 0.09% (w/v) sodium azide and 2% sucrose.
Reconstitution & Storage	Add 50 ul of distilled water. Final anti-HMX1 antibody concentration is 1 mg/ml in PBS buffer with 2% sucrose. For longer periods of storage, store at 20°C. Avoid repeat freeze-thaw cycles.
Precautions	HMX1 antibody - middle region is for research use only and not for use in diagnostic or therapeutic procedures.

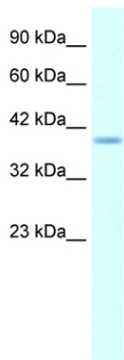
Protein Information

Name	HMX1
Synonyms	H6
Function	DNA-binding protein that binds to the 5'-CAAG-3' core sequence. May function as a transcriptional repressor. Seems to act as a transcriptional antagonist of NKX2-5. May play an important role in the development of craniofacial structures such as the eye and ear.
Cellular Location	Nucleus.

References

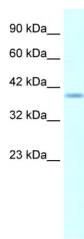
Stadler,H.S., et al., (1995) Mamm. Genome 6 (6), 383-388
Reconstitution and Storage:For short term use, store at 2-8C up to 1 week. For long term storage, store at -20C in small aliquots to prevent freeze-thaw cycles.
Publications:Anti-HMX1 ARP32629_P050 has recently been referenced in the following publications:
1. Spellman, C., Ahmed, M. M., Dubach, D. & Gardiner, K. J. Expression of trisomic proteins in Down syndrome model systems. Gene 512, 219-225 (2013). WB, Mouse, Human23103828

Images



WB Suggested Anti-HMX1 AntibodyTitration:
5.ug/mlPositive Control: Daudi

HMX1 is supported by BioGPS gene expression data to be expressed in Daudi



Rabbit Anti- HMX1 Antibody
Catalog Number: ARP32629
Lot Number: QC2063
Lane: Daudi Cell Lysate

Antibody Titration: 4.0ug/ml
Gel Concentration: 12%

WB Suggested Anti-HMX1 AntibodyTitration: 4. ug/ml
Positive Control: Daudi cell lysate

HMX1 is supported by BioGPS gene expression data to be expressed in Daudi

Please note: All products are 'FOR RESEARCH USE ONLY. NOT FOR USE IN DIAGNOSTIC OR THERAPEUTIC PROCEDURES'.