

FOXA1 antibody - C-terminal region

Rabbit Polyclonal Antibody

Catalog # AI10392

Product Information

Application	WB
Primary Accession	Q0JTB6
Other Accession	NM_004496 , NP_004487
Reactivity	Human, Mouse, Rat, Zebrafish, Pig, Dog, Bovine, Yeast
Predicted	Human, Mouse, Rat, Zebrafish, Pig, Dog, Bovine
Host	Rabbit
Clonality	Polyclonal
Calculated MW	49 KDa

Additional Information

Alias Symbol	HNF3A, TCF3A
Format	Liquid. Purified antibody supplied in 1x PBS buffer with 0.09% (w/v) sodium azide and 2% sucrose.
Reconstitution & Storage	Add 50 ul of distilled water. Final anti-FOXA1 antibody concentration is 1 mg/ml in PBS buffer with 2% sucrose. For longer periods of storage, store at 20°C. Avoid repeat freeze-thaw cycles.
Precautions	FOXA1 antibody - C-terminal region is for research use only and not for use in diagnostic or therapeutic procedures.

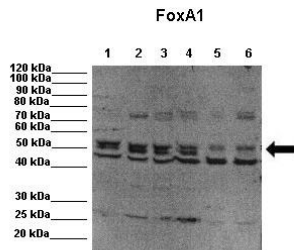
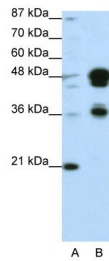
Protein Information

References

Williamson, E.A., (2006) Oncogene 25 (9), 1391-1399
Reconstitution and Storage: For short term use, store at 2-8°C up to 1 week. For long term storage, store at -20°C in small aliquots to prevent freeze-thaw cycles.

Images

WB Suggested Anti-FOXA1 Antibody Titration: .2-1 ug/ml
Positive Control: Transfected 293T



WB Suggested Anti-FOXA1 Antibody

Positive Control: Lane 1: 2ug MCF7 cell lysates Lane 2: 2ug MCF7 cell lysates Lane 3: 2ug MCF7 cell lysates Lane 4: 2ug MCF7 cell lysates Lane 5: 2ug MCF7 with FoxA1 knockdown Lane 6: 2ug MCF7 with FoxA1 knockdown

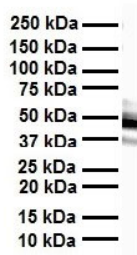
Primary Antibody Dilution : 1:1

Secondary Antibody : Anti-rabbit-HRP

Secondary Antibody Dilution : 1:2

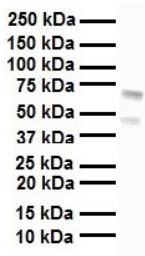
Submitted by: Fu, Xiaoyong, Baylor College of Medicine

FOXA1 is supported by BioGPS gene expression data to be expressed in MCF7



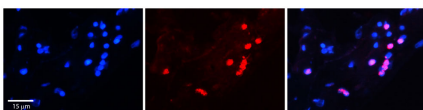
WB Suggested Anti-FOXA1 antibody Titration: 1 ug/mL

Sample Type: Human heart



WB Suggested Anti-FOXA1 antibody Titration: 1 ug/mL

Sample Type: Human liver



Rabbit Anti-FOXA1 antibody

Catalog Number: AI1392

Formalin Fixed Paraffin Embedded Tissue: Human Adult heart

Observed Staining: Nuclei in adipocytes but not in cardiomyocytes

Primary Antibody Concentration: 1:1

Secondary Antibody: Donkey anti-Rabbit-Cy2/3

Secondary Antibody Concentration: 1:2

Magnification: 2X

Exposure Time: .5 – 2. sec
Protocol located in Reviews and Data.

Please note: All products are 'FOR RESEARCH USE ONLY. NOT FOR USE IN DIAGNOSTIC OR THERAPEUTIC PROCEDURES'.