

# MEOX1 antibody - N-terminal region

Rabbit Polyclonal Antibody

Catalog # AI10403

## Product Information

---

<b>Application</b>	WB, IHC
<b>Primary Accession</b>	<a href="#">P50221</a>
<b>Other Accession</b>	<a href="#">NM_004527</a> , <a href="#">NP_004518</a>
<b>Reactivity</b>	Human, Mouse, Rat, Pig, Dog, Bovine
<b>Predicted</b>	Human, Pig, Dog, Bovine
<b>Host</b>	Rabbit
<b>Clonality</b>	Polyclonal
<b>Calculated MW</b>	27997

## Additional Information

---

<b>Gene ID</b>	4222
<b>Alias Symbol</b>	MOX1
<b>Other Names</b>	Homeobox protein MOX-1, Mesenchyme homeobox 1, MEOX1, MOX1
<b>Format</b>	Liquid. Purified antibody supplied in 1x PBS buffer with 0.09% (w/v) sodium azide and 2% sucrose.
<b>Reconstitution &amp; Storage</b>	Add 50 ul of distilled water. Final anti-MEOX1 antibody concentration is 1 mg/ml in PBS buffer with 2% sucrose. For longer periods of storage, store at 20°C. Avoid repeat freeze-thaw cycles.
<b>Precautions</b>	MEOX1 antibody - N-terminal region is for research use only and not for use in diagnostic or therapeutic procedures.

## Protein Information

---

<b>Name</b>	MEOX1
<b>Synonyms</b>	MOX1
<b>Function</b>	Mesodermal transcription factor that plays a key role in somitogenesis and is specifically required for sclerotome development. Required for maintenance of the sclerotome polarity and formation of the cranio-cervical joints (PubMed: <a href="#">23290072</a> , PubMed: <a href="#">24073994</a> ). Binds specifically to the promoter of target genes and regulates their expression. Activates expression of NKX3-2 in the sclerotome. Activates expression of CDKN1A and CDKN2A in endothelial cells, acting as a regulator of vascular cell proliferation. While it activates CDKN1A in a DNA-dependent manner, it activates CDKN2A in a DNA-independent manner. Required for hematopoietic stem cell (HSCs)

induction via its role in somitogenesis: specification of HSCs occurs via the deployment of a specific endothelial precursor population, which arises within a sub-compartment of the somite named endotome.

## Cellular Location

Nucleus {ECO:0000250|UniProtKB:P32442}. Cytoplasm {ECO:0000250|UniProtKB:P32442}. Note=Localizes predominantly in the nucleus. {ECO:0000250|UniProtKB:P32442}

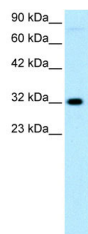
## References

---

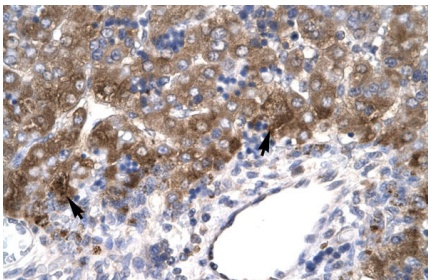
Jones,K.A., et al., (1994) Hum.Mol.Genet.3(11),1927-1934Reconstitution and Storage:For short term use, store at 2-8C up to 1 week. For long term storage, store at -20C in small aliquots to prevent freeze-thaw cycles.

## Images

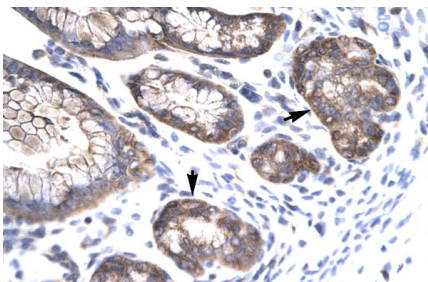
---



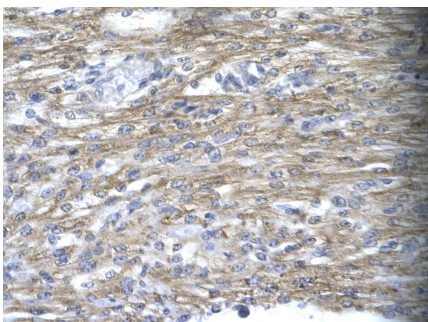
WB Suggested Anti-MEOX1 Antibody Titration: .2-1 ug/ml  
Positive Control: Jurkat cell lysate



Human Liver



Human Stomach



Rabbit Anti-MEOX1 Antibody  
Catalog Number:AI10403  
Paraffin Embedded Tissue: Human cardiac cell  
Cellular Data: Epithelial cells of renal tubule  
Antibody Concentration: 4.-8. ug/ml  
Magnification:4X

Please note: All products are 'FOR RESEARCH USE ONLY. NOT FOR USE IN DIAGNOSTIC OR THERAPEUTIC PROCEDURES'.