

NFIA antibody - middle region

Rabbit Polyclonal Antibody

Catalog # AI10406

Product Information

Application	WB
Primary Accession	Q8TA97
Other Accession	NM_005595 , NP_005586
Reactivity	Human, Mouse, Rat, Zebrafish, Dog, Bovine
Predicted	Human, Mouse, Rat, Zebrafish, Chicken, Bovine
Host	Rabbit
Clonality	Polyclonal
Calculated MW	55 KDa

Additional Information

Alias Symbol	CTF, NF1-A, NFI-A, NFI-L, NF-I/A
Format	Liquid. Purified antibody supplied in 1x PBS buffer with 0.09% (w/v) sodium azide and 2% sucrose.
Reconstitution & Storage	Add 50 ul of distilled water. Final anti-NFIA antibody concentration is 1 mg/ml in PBS buffer with 2% sucrose. For longer periods of storage, store at 20°C. Avoid repeat freeze-thaw cycles.
Precautions	NFIA antibody - middle region is for research use only and not for use in diagnostic or therapeutic procedures.

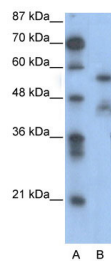
Protein Information

References

Fazi, F., et al., (2005) Cell 123 (5), 819-831
Reconstitution and Storage: For short term use, store at 2-8°C up to 1 week. For long term storage, store at -20°C in small aliquots to prevent freeze-thaw cycles.

Images

WB Suggested Anti-NFIA Antibody Titration: .2-1 ug/ml
Positive Control: Jurkat cell lysate



Please note: All products are 'FOR RESEARCH USE ONLY. NOT FOR USE IN DIAGNOSTIC OR THERAPEUTIC PROCEDURES'.