

NFIX antibody - middle region

Rabbit Polyclonal Antibody

Catalog # AI10408

Product Information

Application	WB, IHC
Primary Accession	Q14938-3
Other Accession	NM_002501 , NP_002492
Reactivity	Human, Mouse, Rat, Zebrafish, Pig, Dog, Bovine
Predicted	Human, Mouse, Rat, Zebrafish, Pig, Dog, Bovine
Host	Rabbit
Clonality	Polyclonal
Calculated MW	49 KDa

Additional Information

Alias Symbol	NF1A
Format	Liquid. Purified antibody supplied in 1x PBS buffer with 0.09% (w/v) sodium azide and 2% sucrose.
Reconstitution & Storage	Add 50 ul of distilled water. Final anti-NFIX antibody concentration is 1 mg/ml in PBS buffer with 2% sucrose. For longer periods of storage, store at 20°C. Avoid repeat freeze-thaw cycles.
Precautions	NFIX antibody - middle region is for research use only and not for use in diagnostic or therapeutic procedures.

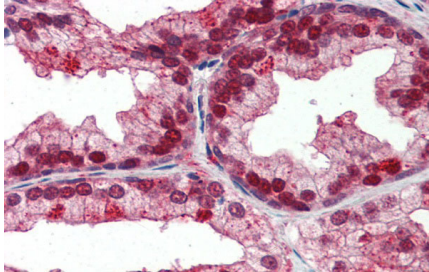
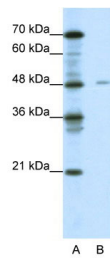
Protein Information

References

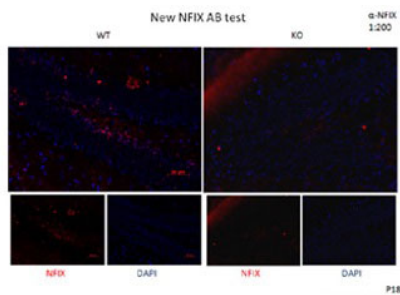
Norquay, L.D., et al., (2003) Mol. Endocrinol. 17 (6), 1027-1038
Reconstitution and Storage: For short term use, store at 2-8°C up to 1 week. For long term storage, store at -20°C in small aliquots to prevent freeze-thaw cycles.

Images

WB Suggested Anti-NFIX Antibody Titration: .2-1 ug/ml
ELISA Titer: 1:3125
Positive Control: Jurkat cell lysate



Immunohistochemistry with Human Prostate lysate tissue at an antibody concentration of 5.ug/ml using anti-NFIX antibody (AI148)



DG of Hippocampus
Dilution:1:2

Please note: All products are 'FOR RESEARCH USE ONLY. NOT FOR USE IN DIAGNOSTIC OR THERAPEUTIC PROCEDURES'.