

# MYEF2 antibody - middle region

Rabbit Polyclonal Antibody

Catalog # AI10413

## Product Information

---

<b>Application</b>	WB, IHC
<b>Primary Accession</b>	<a href="#">Q9P2K5</a>
<b>Other Accession</b>	<a href="#">NM_016132</a> , <a href="#">NP_057216</a>
<b>Reactivity</b>	Human, Mouse, Rat, Zebrafish, Pig, Dog, Bovine
<b>Predicted</b>	Human, Mouse, Rat, Zebrafish, Pig, Chicken, Dog, Bovine
<b>Host</b>	Rabbit
<b>Clonality</b>	Polyclonal
<b>Calculated MW</b>	64122

## Additional Information

---

<b>Gene ID</b>	50804
<b>Alias Symbol</b>	MEF-2, MST156, MSTP156, HsT18564
<b>Other Names</b>	Myelin expression factor 2, MEF-2, MyEF-2, MST156, MYEF2, KIAA1341
<b>Format</b>	Liquid. Purified antibody supplied in 1x PBS buffer with 0.09% (w/v) sodium azide and 2% sucrose.
<b>Reconstitution &amp; Storage</b>	Add 50 ul of distilled water. Final anti-MYEF2 antibody concentration is 1 mg/ml in PBS buffer with 2% sucrose. For longer periods of storage, store at 20°C. Avoid repeat freeze-thaw cycles.
<b>Precautions</b>	MYEF2 antibody - middle region is for research use only and not for use in diagnostic or therapeutic procedures.

## Protein Information

---

<b>Name</b>	MYEF2
<b>Synonyms</b>	KIAA1341
<b>Function</b>	Transcriptional repressor of the myelin basic protein gene (MBP). Binds to the proximal MB1 element 5'-TTGTCC-3' of the MBP promoter. Its binding to MB1 and function are inhibited by PURA (By similarity).
<b>Cellular Location</b>	Nucleus.

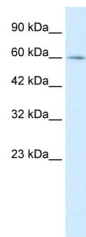
## References

---

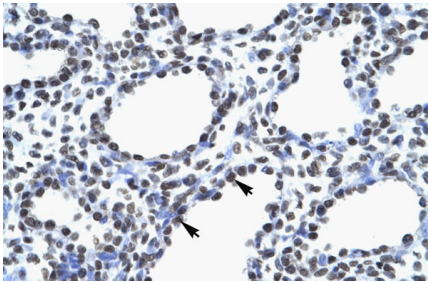
Gossett, L.A., et al., (1989) Mol. Cell. Biol. 9 (11), 5022-5033  
Reconstitution and Storage: For short term use, store at 2-8°C up to 1 week. For long term storage, store at -20°C in small aliquots to prevent freeze-thaw cycles.

## Images

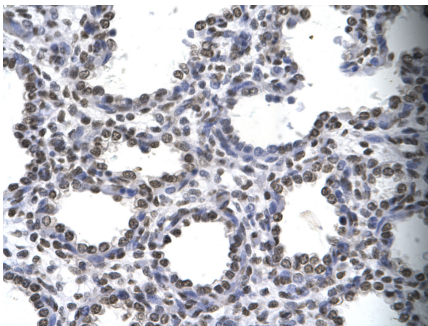
---



WB Suggested Anti-MYEF2 Antibody Titration: .2-1 ug/ml  
Positive Control: Jurkat cell lysate



Human Lung



Rabbit Anti-MYEF2 Antibody  
Catalog Number: AI10413  
Paraffin Embedded Tissue: Human alveolar cell  
Cellular Data: Epithelial cells of renal tubule  
Antibody Concentration: 4.-8. ug/ml  
Magnification: 4X

Please note: All products are 'FOR RESEARCH USE ONLY. NOT FOR USE IN DIAGNOSTIC OR THERAPEUTIC PROCEDURES'.