

ME1 antibody - N-terminal region

Rabbit Polyclonal Antibody

Catalog # AI10418

Product Information

Application	WB, IHC
Primary Accession	P48163
Other Accession	NM_002395 , NP_002386
Reactivity	Human, Mouse, Rat, Pig, Dog, Bovine
Predicted	Pig, Chicken, Dog, Bovine
Host	Rabbit
Clonality	Polyclonal
Calculated MW	64150

Additional Information

Gene ID	4199
Alias Symbol	HUMNDME, MES
Other Names	NADP-dependent malic enzyme, NADP-ME, 1.1.1.40, Malic enzyme 1, ME1
Format	Liquid. Purified antibody supplied in 1x PBS buffer with 0.09% (w/v) sodium azide and 2% sucrose.
Reconstitution & Storage	Add 50 ul of distilled water. Final anti-ME1 antibody concentration is 1 mg/ml in PBS buffer with 2% sucrose. For longer periods of storage, store at 20°C. Avoid repeat freeze-thaw cycles.
Precautions	ME1 antibody - N-terminal region is for research use only and not for use in diagnostic or therapeutic procedures.

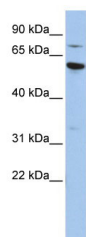
Protein Information

Name	ME1 (HGNC:6983)
Function	Catalyzes the oxidative decarboxylation of (S)-malate in the presence of NADP(+) and divalent metal ions, and decarboxylation of oxaloacetate.
Cellular Location	Cytoplasm.
Tissue Location	Expressed in all tissues tested including liver, placenta and white adipose tissue.

References

Hsieh,J.Y., (2006) J. Biol. Chem. 281 (32), 23237-23245 Reconstitution and Storage:For short term use, store at 2-8C up to 1 week. For long term storage, store at -20C in small aliquots to prevent freeze-thaw cycles.

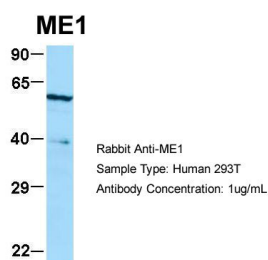
Images



WB Suggested Anti-ME1 Antibody Titration: .2-1 ug/ml

ELISA Titer: 1:3125

Positive Control: HepG2 cell lysate



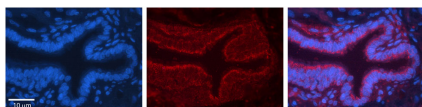
Host:Rabbit

Target Name:ME1

Sample Tissue:293T

Antibody Dilution:1.ug/ml

ME1 is strongly supported by BioGPS gene expression data to be expressed in Human HEK293T cells



Rabbit Anti-ME1 Antibody

Catalog Number: AI1418

Formalin Fixed Paraffin Embedded Tissue: Human

Bronchial Epithelial Tissue

Observed Staining: Cytoplasmic

Primary Antibody Concentration: 1:1

Secondary Antibody: Donkey anti-Rabbit-Cy3

Secondary Antibody Concentration: 1:2

Magnification: 2X

Exposure Time: .5 - 2. sec

Please note: All products are 'FOR RESEARCH USE ONLY. NOT FOR USE IN DIAGNOSTIC OR THERAPEUTIC PROCEDURES'.