

PPP1R13L antibody - middle region

Rabbit Polyclonal Antibody

Catalog # AI10420

Product Information

Application	WB, IHC
Primary Accession	Q8WUF5
Other Accession	NM_006663 , NP_006654
Reactivity	Human, Mouse, Rat, Pig, Dog, Bovine
Predicted	Human, Mouse, Dog, Bovine
Host	Rabbit
Clonality	Polyclonal
Calculated MW	89091

Additional Information

Gene ID	10848
Alias Symbol Other Names	IASPP, NKIP1, RAI, iASPP gene, RAI4 RelA-associated inhibitor, Inhibitor of ASPP protein, Protein iASPP, NFkB-interacting protein 1, PPP1R13B-like protein, PPP1R13L, IASPP, NKIP1, PPP1R13BL, RAI
Format	Liquid. Purified antibody supplied in 1x PBS buffer with 0.09% (w/v) sodium azide and 2% sucrose.
Reconstitution & Storage	Add 50 ul of distilled water. Final anti-PPP1R13L antibody concentration is 1 mg/ml in PBS buffer with 2% sucrose. For longer periods of storage, store at 20°C. Avoid repeat freeze-thaw cycles.
Precautions	PPP1R13L antibody - middle region is for research use only and not for use in diagnostic or therapeutic procedures.

Protein Information

Name	PPP1R13L
Synonyms	IASPP, NKIP1, PPP1R13BL, RAI
Function	Regulator that plays a central role in regulation of apoptosis and transcription via its interaction with NF-kappa-B and p53/TP53 proteins. Blocks transcription of HIV-1 virus by inhibiting the action of both NF-kappa-B and SP1. Also inhibits p53/TP53 function, possibly by preventing the association between p53/TP53 and ASPP1 or ASPP2, and therefore suppressing the subsequent activation of apoptosis (PubMed: 12524540). Is involved in NF-kappa-B dependent negative regulation of inflammatory

response (PubMed:[28069640](#)).

Cellular Location

Cytoplasm. Nucleus Note=Predominantly cytoplasmic but also nuclear

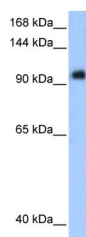
Tissue Location

Highly expressed in heart, placenta and prostate. Weakly expressed in brain, liver, skeletal muscle, testis and peripheral blood leukocyte.

References

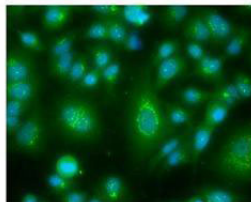
Tomoda,K., (2008) Cancer Sci. 99 (3), 615-622 Reconstitution and Storage:For short term use, store at 2-8C up to 1 week. For long term storage, store at -20C in small aliquots to prevent freeze-thaw cycles.

Images



WB Suggested Anti-PPP1R13L Antibody Titration: .2-1 ug/ml
Positive Control: Transfected 293T

PPP1R13L



Green: PPP1R13L
Blue: DAPI

See IHC 1 Data and Customer Feedback for more information