

Snf8 antibody - N-terminal region

Rabbit Polyclonal Antibody

Catalog # AI10426

Product Information

Application	WB
Primary Accession	Q5RK19
Other Accession	NM_001007804 , NP_001007805
Reactivity	Human, Mouse, Rat, Zebrafish, Dog, Bovine
Predicted	Human, Mouse, Rat, Zebrafish, Chicken, Dog, Bovine
Host	Rabbit
Clonality	Polyclonal
Calculated MW	28884

Additional Information

Gene ID	287645
Alias Symbol	D11moh34, MGC105799, RGD1310144
Other Names	Vacuolar-sorting protein SNF8, ELL-associated protein of 30 kDa, ESCRT-II complex subunit VPS22, Snf8, Eap30
Format	Liquid. Purified antibody supplied in 1x PBS buffer with 0.09% (w/v) sodium azide and 2% sucrose.
Reconstitution & Storage	Add 50 ul of distilled water. Final anti-Snf8 antibody concentration is 1 mg/ml in PBS buffer with 2% sucrose. For longer periods of storage, store at 20°C. Avoid repeat freeze-thaw cycles.
Precautions	Snf8 antibody - N-terminal region is for research use only and not for use in diagnostic or therapeutic procedures.

Protein Information

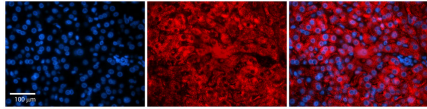
Name	Snf8
Synonyms	Eap30
Function	Required for degradation of both endocytosed EGF and EGFR, but not for the EGFR ligand-mediated internalization (By similarity). Component of the endosomal sorting complex required for transport II (ESCRT-II), which is required for multivesicular body (MVB) formation and sorting of endosomal cargo proteins into MVBs, and plays a role in autophagy. The MVB pathway mediates delivery of transmembrane proteins into the lumen of the lysosome for degradation. The ESCRT-II complex is probably involved in the recruitment of the ESCRT-III complex. The ESCRT-II complex may also play a role in

transcription regulation by participating in derepression of transcription by RNA polymerase II, possibly via its interaction with ELL. Required for the exosomal release of SDCBP, CD63 and syndecan (By similarity).

Cellular Location

Cytoplasm. Endosome membrane. Nucleus. Late endosome membrane.
Note=Recruited to the endosome membrane to participate in vesicle formation.

Images



Rabbit Anti-Snf8 Antibody

Catalog Number: AI1426

Formalin Fixed Paraffin Embedded Tissue: Human Adult liver

Observed Staining: Cytoplasmic

Primary Antibody Concentration: 1:1

Secondary Antibody: Donkey anti-Rabbit-Cy2/3

Secondary Antibody Concentration: 1:2

Magnification: 2X

Exposure Time: .5 – 2. sec

Protocol located in Reviews and Data.

Please note: All products are 'FOR RESEARCH USE ONLY. NOT FOR USE IN DIAGNOSTIC OR THERAPEUTIC PROCEDURES'.