

SLC39A10 Antibody - N-terminal region

Rabbit Polyclonal Antibody

Catalog # AI10440

Product Information

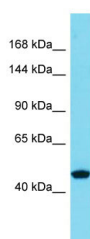
| | |
|--------------------------|---|
| Application | WB |
| Primary Accession | B4DGU0 |
| Reactivity | Human, Mouse, Rat, Zebrafish, Dog, Bovine |
| Predicted | Zebrafish, Dog, Bovine |
| Host | Rabbit |
| Clonality | Polyclonal |
| Calculated MW | 41 kDa |

Additional Information

| | |
|-------------------------------------|---|
| Format | Liquid. Purified antibody supplied in 1x PBS buffer with 0.09% (w/v) sodium azide and 2% sucrose. |
| Reconstitution & Storage | Add 50 ul of distilled water. Final anti-SLC39A10 antibody concentration is 1 mg/ml in PBS buffer with 2% sucrose. For longer periods of storage, store at 20°C. Avoid repeat freeze-thaw cycles. |
| Precautions | SLC39A10 Antibody - N-terminal region is for research use only and not for use in diagnostic or therapeutic procedures. |

Protein Information

Images



Host:Rabbit
Target Name:SLC39A1
Sample Tissue: Thyroid Tumor lysates
Antibody Dilution:1.ug/ml

Please note: All products are 'FOR RESEARCH USE ONLY. NOT FOR USE IN DIAGNOSTIC OR THERAPEUTIC PROCEDURES'.