

# ECD antibody - N-terminal region

Rabbit Polyclonal Antibody

Catalog # AI10449

## Product Information

<b>Application</b>	WB
<b>Primary Accession</b>	<a href="#">O95905</a>
<b>Other Accession</b>	<a href="#">NM_007265</a> , <a href="#">NP_009196</a>
<b>Reactivity</b>	Human, Mouse, Rat, Pig, Dog, Bovine
<b>Predicted</b>	Human, Mouse, Pig, Dog, Bovine
<b>Host</b>	Rabbit
<b>Clonality</b>	Polyclonal
<b>Calculated MW</b>	72758

## Additional Information

<b>Gene ID</b>	11319
<b>Alias Symbol</b>	GCR2, HSGT1
<b>Other Names</b>	Protein SGT1, hSGT1, Protein ecdysoneless homolog, Suppressor of GCR2, ECD, SGT1
<b>Format</b>	Liquid. Purified antibody supplied in 1x PBS buffer with 0.09% (w/v) sodium azide and 2% sucrose.
<b>Reconstitution &amp; Storage</b>	Add 50 ul of distilled water. Final anti-ECD antibody concentration is 1 mg/ml in PBS buffer with 2% sucrose. For longer periods of storage, store at 20°C. Avoid repeat freeze-thaw cycles.
<b>Precautions</b>	ECD antibody - N-terminal region is for research use only and not for use in diagnostic or therapeutic procedures.

## Protein Information

<b>Name</b>	ECD
<b>Function</b>	Regulator of p53/TP53 stability and function. Inhibits MDM2- mediated degradation of p53/TP53 possibly by cooperating in part with TXNIP (PubMed: <a href="#">16849563</a> , PubMed: <a href="#">23880345</a> ). May be involved transcriptional regulation. In vitro has intrinsic transactivation activity enhanced by EP300. May be a transcriptional activator required for the expression of glycolytic genes (PubMed: <a href="#">19919181</a> , PubMed: <a href="#">9928932</a> ). Involved in regulation of cell cycle progression. Proposed to disrupt Rb-E2F binding leading to transcriptional activation of E2F proteins (PubMed: <a href="#">19640839</a> ). The cell cycle -regulating function may depend on its RUVBL1-mediated association with the R2TP complex (PubMed: <a href="#">26711270</a> ). May play a role in regulation of pre-mRNA

splicing (PubMed:[24722212](#)). Participates together with DDX39A in mRNA nuclear export (PubMed:[33941617](#)).

**Cellular Location**

Cytoplasm. Nucleus Note=Predominantly is located in the cytoplasm

**Tissue Location**

Highly expressed in muscle and heart. Over- expressed in pancreatic and breast cancers

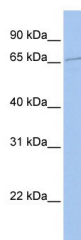
## References

---

Olsen,J.V., (2006) Cell 127 (3), 635-648 Reconstitution and Storage:For short term use, store at 2-8C up to 1 week. For long term storage, store at -20C in small aliquots to prevent freeze-thaw cycles.

## Images

---



WB Suggested Anti-ECD Antibody Titration: .2-1 ug/ml  
ELISA Titer: 1:3125  
Positive Control: Jurkat cell lysate

Please note: All products are 'FOR RESEARCH USE ONLY. NOT FOR USE IN DIAGNOSTIC OR THERAPEUTIC PROCEDURES'.