

GPR75 antibody - middle region

Rabbit Polyclonal Antibody

Catalog # AI10463

Product Information

| | |
|--------------------------|---|
| Application | WB |
| Primary Accession | B2RC02 |
| Other Accession | NM_006794 , NP_006785 |
| Reactivity | Human, Mouse, Rat, Zebrafish, Pig, Bovine |
| Predicted | Human, Mouse, Rat, Zebrafish, Pig, Chicken, Bovine |
| Host | Rabbit |
| Clonality | Polyclonal |
| Calculated MW | 59 KDa |

Additional Information

| | |
|-------------------------------------|--|
| Alias Symbol | GPR-chr2, WI-31133, GPRchr2, WI31133 |
| Format | Liquid. Purified antibody supplied in 1x PBS buffer with 0.09% (w/v) sodium azide and 2% sucrose. |
| Reconstitution & Storage | Add 50 ul of distilled water. Final anti-GPR75 antibody concentration is 1 mg/ml in PBS buffer with 2% sucrose. For longer periods of storage, store at 20°C. Avoid repeat freeze-thaw cycles. |
| Precautions | GPR75 antibody - middle region is for research use only and not for use in diagnostic or therapeutic procedures. |

Protein Information

References

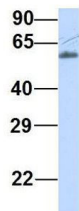
Hillier, L.W., (2005) Nature 434 (7034), 724-731 Reconstitution and Storage: For short term use, store at 2-8°C up to 1 week. For long term storage, store at -20°C in small aliquots to prevent freeze-thaw cycles.

Images

WB Suggested Anti-GPR75 Antibody Titration: .2-1 ug/ml
ELISA Titer: 1:625
Positive Control: HepG2 cell lysate



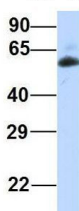
GPR75



Rabbit Anti-GPR75
Sample Type: Human Adult Placenta
Antibody Concentration: 1ug/mL

Host:Rabbit
Target Name:GPR75
Sample Tissue:Human Adult Placenta
Antibody Dilution:1.ug/ml

GPR75



Rabbit Anti-GPR75
Sample Type: Human Fetal Muscle
Antibody Concentration: 1ug/mL

Host:Rabbit
Target Name:GPR75
Sample Tissue:Human Fetal Muscle
Antibody Dilution:1.ug/ml

Please note: All products are 'FOR RESEARCH USE ONLY. NOT FOR USE IN DIAGNOSTIC OR THERAPEUTIC PROCEDURES'.