

DBI antibody - N-terminal region

Rabbit Polyclonal Antibody

Catalog # AI10471

Product Information

Application	WB, IHC
Primary Accession	P07108
Other Accession	NM_001079862 , NP_001073331
Reactivity	Human, Mouse, Rat, Dog, Bovine
Predicted	Human, Mouse, Pig
Host	Rabbit
Clonality	Polyclonal
Calculated MW	10044

Additional Information

Gene ID	1622
Alias Symbol	ACBD1, ACBP, CCK-RP, EP, MGC70414
Other Names	Acyl-CoA-binding protein, ACBP, Diazepam-binding inhibitor, DBI, Endozepine, EP, DBI
Format	Liquid. Purified antibody supplied in 1x PBS buffer with 0.09% (w/v) sodium azide and 2% sucrose.
Reconstitution & Storage	Add 50 ul of distilled water. Final anti-DBI antibody concentration is 1 mg/ml in PBS buffer with 2% sucrose. For longer periods of storage, store at 20°C. Avoid repeat freeze-thaw cycles.
Precautions	DBI antibody - N-terminal region is for research use only and not for use in diagnostic or therapeutic procedures.

Protein Information

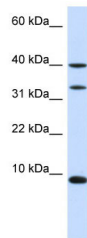
Name	DBI
Function	Binds medium- and long-chain acyl-CoA esters with very high affinity and may function as an intracellular carrier of acyl-CoA esters. It is also able to displace diazepam from the benzodiazepine (BZD) recognition site located on the GABA type A receptor. It is therefore possible that this protein also acts as a neuropeptide to modulate the action of the GABA receptor.
Cellular Location	Endoplasmic reticulum. Golgi apparatus Note=Golgi localization is dependent on ligand binding (PubMed:17953517).
Tissue Location	Isoform 1 is ubiquitous, with a moderate expression level. Isoform 2 is

ubiquitous with high level in liver and adipose tissue. Isoform 3 is ubiquitous with strong expression in adipose tissue and heart.

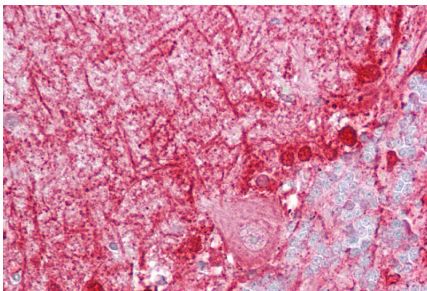
References

Waga,C., (2007) Nihon Arukoru Yakubutsu Igakkai Zasshi 42 (6), 629-634 Reconstitution and Storage:For short term use, store at 2-8C up to 1 week. For long term storage, store at -20C in small aliquots to prevent freeze-thaw cycles.

Images



WB Suggested Anti-DBI Antibody Titration: .2-1 ug/ml
ELISA Titer: 1:15625
Positive Control: Human Liver



Immunohistochemistry with Brain, cerebellum tissue at an antibody concentration of 5ug/ml using anti-DBI antibody (AI1471)

Please note: All products are 'FOR RESEARCH USE ONLY. NOT FOR USE IN DIAGNOSTIC OR THERAPEUTIC PROCEDURES'.