

# GATAD1 antibody - C-terminal region

Rabbit Polyclonal Antibody

Catalog # AI10476

## Product Information

---

<b>Application</b>	WB
<b>Primary Accession</b>	<a href="#">Q8WUU5</a>
<b>Other Accession</b>	<a href="#">NM_021167</a> , <a href="#">NP_066990</a>
<b>Reactivity</b>	Human, Mouse, Rat, Zebrafish, Dog, Bovine
<b>Predicted</b>	Mouse, Rat, Chicken, Dog
<b>Host</b>	Rabbit
<b>Clonality</b>	Polyclonal
<b>Calculated MW</b>	28690

## Additional Information

---

<b>Gene ID</b>	57798
<b>Alias Symbol</b>	ODAG, RG083M05.2
<b>Other Names</b>	GATA zinc finger domain-containing protein 1, Ocular development-associated gene protein, GATAD1, ODAG
<b>Format</b>	Liquid. Purified antibody supplied in 1x PBS buffer with 0.09% (w/v) sodium azide and 2% sucrose.
<b>Reconstitution &amp; Storage</b>	Add 50 ul of distilled water. Final anti-GATAD1 antibody concentration is 1 mg/ml in PBS buffer with 2% sucrose. For longer periods of storage, store at 20°C. Avoid repeat freeze-thaw cycles.
<b>Precautions</b>	GATAD1 antibody - C-terminal region is for research use only and not for use in diagnostic or therapeutic procedures.

## Protein Information

---

<b>Name</b>	GATAD1
<b>Synonyms</b>	ODAG
<b>Function</b>	Component of some chromatin complex recruited to chromatin sites methylated 'Lys-4' of histone H3 (H3K4me), with a preference for trimethylated form (H3K4me3).
<b>Cellular Location</b>	Nucleus.
<b>Tissue Location</b>	Ubiquitously expressed among various tissue types. Expressed in left ventricular myocytes.

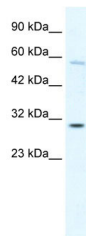
## References

---

Tsuruga,T., et al., (2002) Gene 290 (1-2), 125-130  
Reconstitution and Storage: For short term use, store at 2-8C up to 1 week. For long term storage, store at -20C in small aliquots to prevent freeze-thaw cycles.

## Images

---



WB Suggested Anti-GATAD1 Antibody Titration: .2-1  
ug/ml  
ELISA Titer: 1:625  
Positive Control: K562 cell lysate

GATAD1 is strongly supported by BioGPS gene expression  
data to be expressed in Human K562 cells

Please note: All products are 'FOR RESEARCH USE ONLY. NOT FOR USE IN DIAGNOSTIC OR THERAPEUTIC PROCEDURES'.