

GATAD1 antibody - middle region

Rabbit Polyclonal Antibody

Catalog # AI10477

Product Information

Application	WB
Primary Accession	Q8WUU5
Other Accession	NM_021167 , NP_066990
Reactivity	Human, Mouse, Rat, Zebrafish, Dog, Bovine
Predicted	Rat, Chicken, Dog
Host	Rabbit
Clonality	Polyclonal
Calculated MW	28690

Additional Information

Gene ID	57798
Alias Symbol Other Names	FLJ22489, FLJ40695, ODAG, RG083M05.2 GATA zinc finger domain-containing protein 1, Ocular development-associated gene protein, GATAD1, ODAG
Format	Liquid. Purified antibody supplied in 1x PBS buffer with 0.09% (w/v) sodium azide and 2% sucrose.
Reconstitution & Storage	Add 50 ul of distilled water. Final anti-GATAD1 antibody concentration is 1 mg/ml in PBS buffer with 2% sucrose. For longer periods of storage, store at 20°C. Avoid repeat freeze-thaw cycles.
Precautions	GATAD1 antibody - middle region is for research use only and not for use in diagnostic or therapeutic procedures.

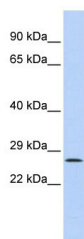
Protein Information

Name	GATAD1
Synonyms	ODAG
Function	Component of some chromatin complex recruited to chromatin sites methylated 'Lys-4' of histone H3 (H3K4me), with a preference for trimethylated form (H3K4me3).
Cellular Location	Nucleus.
Tissue Location	Ubiquitously expressed among various tissue types. Expressed in left ventricular myocytes.

References

Tsuruga,T., Gene 290 (1-2), 125-130 (2002)Reconstitution and Storage:For short term use, store at 2-8C up to 1 week. For long term storage, store at -20C in small aliquots to prevent freeze-thaw cycles.

Images



WB Suggested Anti-GATAD1 Antibody Titration: .2-1
ug/ml
ELISA Titer: 1:3125
Positive Control: HepG2 cell lysate

Please note: All products are 'FOR RESEARCH USE ONLY. NOT FOR USE IN DIAGNOSTIC OR THERAPEUTIC PROCEDURES'.