

DMRTA2 antibody - C-terminal region

Rabbit Polyclonal Antibody

Catalog # AI10480

Product Information

Application	WB, IHC
Primary Accession	Q5TFQ3
Other Accession	XM_027162 , XP_027162
Reactivity	Human, Mouse, Rat, Pig, Dog, Bovine
Predicted	Human, Rat
Host	Rabbit
Clonality	Polyclonal
Calculated MW	49 kDa

Additional Information

Format	Liquid. Purified antibody supplied in 1x PBS buffer with 0.09% (w/v) sodium azide and 2% sucrose.
Reconstitution & Storage	Add 50 ul of distilled water. Final anti-DMRTA2 antibody concentration is 1 mg/ml in PBS buffer with 2% sucrose. For longer periods of storage, store at 20°C. Avoid repeat freeze-thaw cycles.
Precautions	DMRTA2 antibody - C-terminal region is for research use only and not for use in diagnostic or therapeutic procedures.

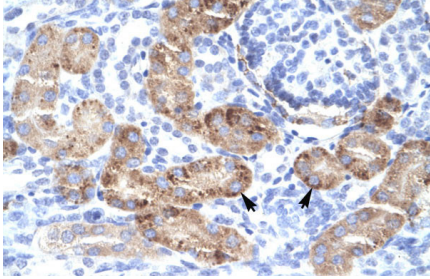
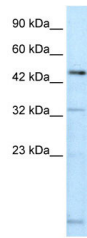
Protein Information

References

Shui Y., et al., (2004) Yi Chuan Xue Bao. 31(5), 468-73
Reconstitution and Storage: For short term use, store at 2-8°C up to 1 week. For long term storage, store at -20°C in small aliquots to prevent freeze-thaw cycles.

Images

WB Suggested Anti-DMRTA2 Antibody Titration: .2-1 ug/ml
ELISA Titer: 1:625
Positive Control: Jurkat cell lysate



Human kidney

Please note: All products are 'FOR RESEARCH USE ONLY. NOT FOR USE IN DIAGNOSTIC OR THERAPEUTIC PROCEDURES'.