

# ZNF336 antibody - N-terminal region

Rabbit Polyclonal Antibody

Catalog # AI10487

## Product Information

---

<b>Application</b>	WB, IHC
<b>Primary Accession</b>	<a href="#">Q9H116</a>
<b>Other Accession</b>	<a href="#">NM_022482</a> , <a href="#">NP_071927</a>
<b>Reactivity</b>	Human, Mouse, Rat, Pig, Dog, Bovine
<b>Predicted</b>	Human, Mouse, Rat, Dog, Bovine
<b>Host</b>	Rabbit
<b>Clonality</b>	Polyclonal
<b>Calculated MW</b>	80492

## Additional Information

---

<b>Gene ID</b>	64412
<b>Alias Symbol</b>	ZBTB23, ZNF336
<b>Other Names</b>	GDNF-inducible zinc finger protein 1, Zinc finger and BTB domain-containing protein 23, Zinc finger protein 336, GZF1, ZBTB23, ZNF336
<b>Format</b>	Liquid. Purified antibody supplied in 1x PBS buffer with 0.09% (w/v) sodium azide and 2% sucrose.
<b>Reconstitution &amp; Storage</b>	Add 50 ul of distilled water. Final anti-ZNF336 antibody concentration is 1 mg/ml in PBS buffer with 2% sucrose. For longer periods of storage, store at 20°C. Avoid repeat freeze-thaw cycles.
<b>Precautions</b>	ZNF336 antibody - N-terminal region is for research use only and not for use in diagnostic or therapeutic procedures.

## Protein Information

---

<b>Name</b>	GZF1 ( <a href="#">HGNC:15808</a> )
<b>Synonyms</b>	ZBTB23, ZNF336
<b>Function</b>	Transcriptional repressor that binds the GZF1 responsive element (GRE) (consensus: 5'-TGCGCN[ TG ][ CA ]TATA-3'). May be regulating VSX2/HOX10 expression.
<b>Cellular Location</b>	Cytoplasm. Nucleus, nucleoplasm Nucleus, nucleolus. Note=Nuclear localization depends upon NCL.
<b>Tissue Location</b>	Expressed in adult brain, heart, skeletal muscle, kidney and liver. Also

detected in fetal brain and kidney, and at lower levels in fetal lung and liver.

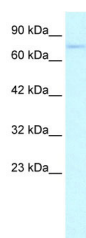
## References

---

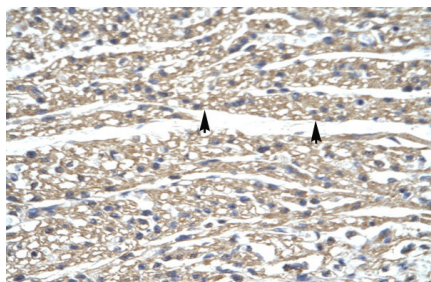
Fukuda,N., et al., (2003) J. Biol. Chem. 278 (50), 50386-50392  
Reconstitution and Storage: For short term use, store at 2-8C up to 1 week. For long term storage, store at -20C in small aliquots to prevent freeze-thaw cycles.

## Images

---



WB Suggested Anti-ZNF336 Antibody Titration: .2-1 ug/ml  
ELISA Titer: 1:125  
Positive Control: HepG2 cell lysate



Human Heart

Please note: All products are 'FOR RESEARCH USE ONLY. NOT FOR USE IN DIAGNOSTIC OR THERAPEUTIC PROCEDURES'.