

SHOX2 antibody - middle region

Rabbit Polyclonal Antibody

Catalog # AI10489

Product Information

Application	WB
Primary Accession	O60902
Other Accession	NM_006884 , NP_006875
Reactivity	Human, Mouse, Rat, Zebrafish, Dog, Bovine
Predicted	Human, Mouse, Rat, Zebrafish, Dog, Bovine
Host	Rabbit
Clonality	Polyclonal
Calculated MW	34953

Additional Information

Gene ID	6474
Alias Symbol	OG12, OG12X, OGI2X, SHOT
Other Names	Short stature homeobox protein 2, Homeobox protein Og12X, Paired-related homeobox protein SHOT, SHOX2, OG12X, SHOT
Format	Liquid. Purified antibody supplied in 1x PBS buffer with 0.09% (w/v) sodium azide and 2% sucrose.
Reconstitution & Storage	Add 50 ul of distilled water. Final anti-SHOX2 antibody concentration is 1 mg/ml in PBS buffer with 2% sucrose. For longer periods of storage, store at 20°C. Avoid repeat freeze-thaw cycles.
Precautions	SHOX2 antibody - middle region is for research use only and not for use in diagnostic or therapeutic procedures.

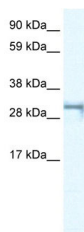
Protein Information

Name	SHOX2
Synonyms	OG12X, SHOT
Function	May be a growth regulator and have a role in specifying neural systems involved in processing somatosensory information, as well as in face and body structure formation.
Cellular Location	Nucleus.
Tissue Location	Expressed in heart, skeletal muscle, liver, lung, bone marrow fibroblast, pancreas and placenta

References

Blaschke, R.J., et al., (1998) Proc. Natl. Acad. Sci. U.S.A. 95 (5), 2406-2411
Reconstitution and Storage: For short term use, store at 2-8°C up to 1 week. For long term storage, store at -20°C in small aliquots to prevent freeze-thaw cycles.

Images



WB Suggested Anti-SHOX2 Antibody Titration: .2-1 ug/ml
ELISA Titer: 1:625
Positive Control: Jurkat cell lysate

Please note: All products are 'FOR RESEARCH USE ONLY. NOT FOR USE IN DIAGNOSTIC OR THERAPEUTIC PROCEDURES'.