

# TCF7L2 antibody - N-terminal region

Rabbit Polyclonal Antibody

Catalog # AI10511

## Product Information

---

<b>Application</b>	WB
<b>Primary Accession</b>	<a href="#">Q6FHW4</a>
<b>Other Accession</b>	<a href="#">NM_030756</a> , <a href="#">NP_110383</a>
<b>Reactivity</b>	Human, Mouse, Rat, Zebrafish, Pig, Bovine
<b>Predicted</b>	Human, Mouse, Rat, Zebrafish, Pig, Bovine
<b>Host</b>	Rabbit
<b>Clonality</b>	Polyclonal
<b>Calculated MW</b>	65 KDa

## Additional Information

---

<b>Alias Symbol</b>	TCF-4, TCF4
<b>Format</b>	Liquid. Purified antibody supplied in 1x PBS buffer with 0.09% (w/v) sodium azide and 2% sucrose.
<b>Reconstitution &amp; Storage</b>	Add 50 ul of distilled water. Final anti-TCF7L2 antibody concentration is 1 mg/ml in PBS buffer with 2% sucrose. For longer periods of storage, store at 20°C. Avoid repeat freeze-thaw cycles.
<b>Precautions</b>	TCF7L2 antibody - N-terminal region is for research use only and not for use in diagnostic or therapeutic procedures.

## Protein Information

---

## References

---

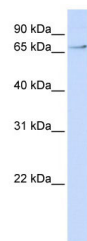
Ren,Q., (2008) Diabetologia 51 (7), 1146-1152 Reconstitution and Storage:For short term use, store at 2-8C up to 1 week. For long term storage, store at -20C in small aliquots to prevent freeze-thaw cycles.

## Images

---

WB Suggested Anti-TCF7L2 Antibody Titration: .2-1 ug/ml  
ELISA Titer: 1:25  
Positive Control: Hela cell lysate

There is BioGPS gene expression data showing that  
TCF7L2 is expressed in HeLa



Please note: All products are 'FOR RESEARCH USE ONLY. NOT FOR USE IN DIAGNOSTIC OR THERAPEUTIC PROCEDURES'.