

TCF7L2 antibody - middle region

Rabbit Polyclonal Antibody

Catalog # AI10512

Product Information

Application	WB
Primary Accession	Q6FHW4
Other Accession	NM_030756 , NP_110383
Reactivity	Human, Mouse, Rat, Zebrafish, Pig, Dog, Bovine
Predicted	Human, Mouse, Rat, Zebrafish, Pig, Chicken, Dog, Bovine
Host	Rabbit
Clonality	Polyclonal
Calculated MW	65 KDa

Additional Information

Alias Symbol	TCF-4, TCF4
Format	Liquid. Purified antibody supplied in 1x PBS buffer with 0.09% (w/v) sodium azide and 2% sucrose.
Reconstitution & Storage	Add 50 ul of distilled water. Final anti-TCF7L2 antibody concentration is 1 mg/ml in PBS buffer with 2% sucrose. For longer periods of storage, store at 20°C. Avoid repeat freeze-thaw cycles.
Precautions	TCF7L2 antibody - middle region is for research use only and not for use in diagnostic or therapeutic procedures.

Protein Information

References

Ren,Q., (2008) Diabetologia 51 (7), 1146-1152 Reconstitution and Storage:For short term use, store at 2-8C up to 1 week. For long term storage, store at -20C in small aliquots to prevent freeze-thaw cycles.

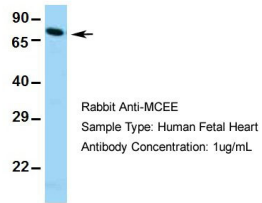
Images

WB Suggested Anti-TCF7L2 Antibody Titration: .2-1 ug/ml
ELISA Titer: 1:25
Positive Control: Human Muscle



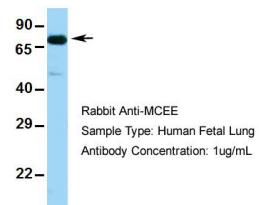
TCF7L2

Hum. Fetal Heart



TCF7L2

Hum. Fetal Lung



Please note: All products are 'FOR RESEARCH USE ONLY. NOT FOR USE IN DIAGNOSTIC OR THERAPEUTIC PROCEDURES'.