

TCF21 antibody - N-terminal region

Rabbit Polyclonal Antibody

Catalog # AI10514

Product Information

Application	WB, IHC
Primary Accession	O43680
Other Accession	NM_003206 , NP_003197
Reactivity	Human, Mouse, Rat, Pig, Dog, Bovine
Predicted	Human, Mouse, Rat, Pig, Chicken, Dog, Bovine
Host	Rabbit
Clonality	Polyclonal
Calculated MW	19715

Additional Information

Gene ID	6943
Alias Symbol	POD1, bHLHa23
Other Names	Transcription factor 21, TCF-21, Capsulin, Class A basic helix-loop-helix protein 23, bHLHa23, Epicardin, Podocyte-expressed 1, Pod-1, TCF21, BHLHA23, POD1
Format	Liquid. Purified antibody supplied in 1x PBS buffer with 0.09% (w/v) sodium azide and 2% sucrose.
Reconstitution & Storage	Add 50 ul of distilled water. Final anti-TCF21 antibody concentration is 1 mg/ml in PBS buffer with 2% sucrose. For longer periods of storage, store at 20°C. Avoid repeat freeze-thaw cycles.
Precautions	TCF21 antibody - N-terminal region is for research use only and not for use in diagnostic or therapeutic procedures.

Protein Information

Name	TCF21
Synonyms	BHLHA23, POD1
Function	Involved in epithelial-mesenchymal interactions in kidney and lung morphogenesis that include epithelial differentiation and branching morphogenesis. May play a role in the specification or differentiation of one or more subsets of epicardial cell types.
Cellular Location	Nucleus.

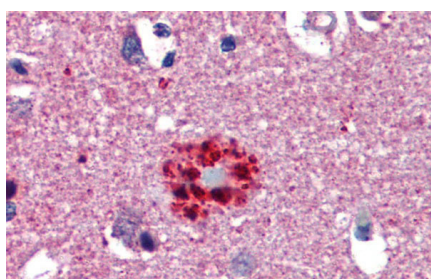
References

Funato,N., et al., (2003) J. Biol. Chem. 278 (9), 7486-7493
Reconstitution and Storage:For short term use, store at 2-8C up to 1 week. For long term storage, store at -20C in small aliquots to prevent freeze-thaw cycles.

Images



Host:Rabbit
Target Name:TCF21
Sample Tissue: HeLa Whole cell lysates
Antibody Dilution:1.ug/ml



Immunohistochemistry with Human Brain, cortex, senile plaque tissue at an antibody concentration of 5.ug/ml using anti-TCF21 antibody (AI1514)

Please note: All products are 'FOR RESEARCH USE ONLY. NOT FOR USE IN DIAGNOSTIC OR THERAPEUTIC PROCEDURES'.