

TEAD4 antibody - middle region

Rabbit Polyclonal Antibody

Catalog # AI10515

Product Information

Application	WB, IF
Primary Accession	Q15561
Other Accession	NM_201441 , NP_958849
Reactivity	Human, Mouse, Rat, Pig, Dog, Bovine
Predicted	Human, Mouse, Pig, Chicken, Dog, Bovine
Host	Rabbit
Clonality	Polyclonal
Calculated MW	48329

Additional Information

Gene ID	7004
Alias Symbol Other Names	EFTR-2, MGC9014, RTEF1, TCF13L1, TEF-3, TEFR-1, hrTEF-1B, TEF3 Transcriptional enhancer factor TEF-3, TEA domain family member 4, TEAD-4, Transcription factor 13-like 1, Transcription factor RTEF-1, TEAD4, RTEF1, TCF13L1, TEF3
Format	Liquid. Purified antibody supplied in 1x PBS buffer with 0.09% (w/v) sodium azide and 2% sucrose.
Reconstitution & Storage	Add 50 ul of distilled water. Final anti-TEAD4 antibody concentration is 1 mg/ml in PBS buffer with 2% sucrose. For longer periods of storage, store at 20°C. Avoid repeat freeze-thaw cycles.
Precautions	TEAD4 antibody - middle region is for research use only and not for use in diagnostic or therapeutic procedures.

Protein Information

Name	TEAD4
Synonyms	RTEF1, TCF13L1, TEF3
Function	Transcription factor which plays a key role in the Hippo signaling pathway, a pathway involved in organ size control and tumor suppression by restricting proliferation and promoting apoptosis. The core of this pathway is composed of a kinase cascade wherein MST1/MST2, in complex with its regulatory protein SAV1, phosphorylates and activates LATS1/2 in complex with its regulatory protein MOB1, which in turn phosphorylates and inactivates YAP1 oncoprotein and WWTR1/TAZ. Acts by mediating gene expression of YAP1 and

WWTR1/TAZ, thereby regulating cell proliferation, migration and epithelial mesenchymal transition (EMT) induction. Binds specifically and non-cooperatively to the Sph and GT-IIC 'enhancers' (5'-GTGGAATGT-3') and activates transcription. Binds to the M-CAT motif.

Cellular Location

Nucleus.

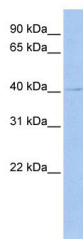
Tissue Location

Preferentially expressed in skeletal muscle. Lower levels in pancreas, placenta, and heart

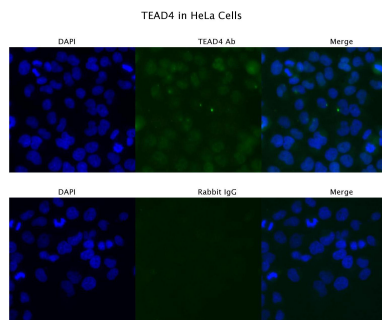
References

Appukuttan,B., (2007) Invest. Ophthalmol. Vis. Sci. 48 (8), 3775-3782 Reconstitution and Storage:For short term use, store at 2-8C up to 1 week. For long term storage, store at -20C in small aliquots to prevent freeze-thaw cycles.Publications:Chan, S. W. et al. TEADs mediate nuclear retention of TAZ to promote oncogenic transformation. J. Biol. Chem. 284, 14347-58 (2009). WB, Pig, Human, Bovine, Dog, Horse, Rabbit, Guinea pig, Mouse, Rat19324876

Images



WB Suggested Anti-TEAD4 Antibody Titration: .2-1 ug/ml
ELISA Titer: 1:125
Positive Control: Transfected 293T



Sample Type :
HeLa
Primary Antibody Dilution:
4 ug/ml
Secondary Antibody :
Anti-rabbit Alexa 546
Secondary Antibody Dilution:
2 ug/ml
Gene Name :
TEAD4

Please note: All products are 'FOR RESEARCH USE ONLY. NOT FOR USE IN DIAGNOSTIC OR THERAPEUTIC PROCEDURES'.