

# Wnt8b Antibody - C-terminal region

Rabbit Polyclonal Antibody

Catalog # AI10521

## Product Information

---

<b>Application</b>	WB
<b>Primary Accession</b>	<a href="#">Q9WUD6</a>
<b>Other Accession</b>	<a href="#">NM_011720</a> , <a href="#">NP_035850</a>
<b>Reactivity</b>	Human, Mouse, Rat, Pig, Dog, Bovine
<b>Predicted</b>	Dog
<b>Host</b>	Rabbit
<b>Clonality</b>	Polyclonal
<b>Calculated MW</b>	38576

## Additional Information

---

<b>Gene ID</b>	22423
<b>Other Names</b>	Protein Wnt-8b, Wnt8b
<b>Format</b>	Liquid. Purified antibody supplied in 1x PBS buffer with 0.09% (w/v) sodium azide and 2% sucrose.
<b>Reconstitution &amp; Storage</b>	Add 50 ul of distilled water. Final anti-Wnt8b antibody concentration is 1 mg/ml in PBS buffer with 2% sucrose. For longer periods of storage, store at 20°C. Avoid repeat freeze-thaw cycles.
<b>Precautions</b>	Wnt8b Antibody - C-terminal region is for research use only and not for use in diagnostic or therapeutic procedures.

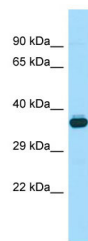
## Protein Information

---

<b>Name</b>	Wnt8b
<b>Function</b>	Ligand for members of the frizzled family of seven transmembrane receptors. May play an important role in the development and differentiation of certain forebrain structures, notably the hippocampus.
<b>Cellular Location</b>	Secreted, extracellular space, extracellular matrix

## Images

---



Host:Rabbit  
Target Name:Wnt8b  
Sample Tissue: Mouse Testis lysates  
Antibody Dilution:1.ug/ml

Please note: All products are 'FOR RESEARCH USE ONLY. NOT FOR USE IN DIAGNOSTIC OR THERAPEUTIC PROCEDURES'.