

LHX3 antibody - middle region

Rabbit Polyclonal Antibody

Catalog # AI10541

Product Information

Application	WB, IHC
Primary Accession	Q9UBR4-2
Other Accession	NM_014564 , NP_055379
Reactivity	Human, Mouse, Rat, Zebrafish, Dog, Bovine
Predicted	Human, Mouse, Rat, Pig, Chicken, Dog, Bovine
Host	Rabbit
Clonality	Polyclonal
Calculated MW	44 KDa

Additional Information

Alias Symbol	LIM3, CPHD3, M2-LHX3
Format	Liquid. Purified antibody supplied in 1x PBS buffer with 0.09% (w/v) sodium azide and 2% sucrose.
Reconstitution & Storage	Add 100 ul of distilled water. Final anti-LHX3 antibody concentration is 1 mg/ml in PBS buffer with 2% sucrose. For longer periods of storage, store at 20°C. Avoid repeat freeze-thaw cycles.
Precautions	LHX3 antibody - middle region is for research use only and not for use in diagnostic or therapeutic procedures.

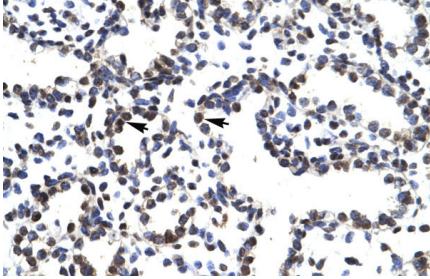
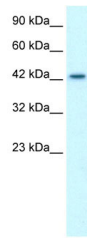
Protein Information

References

Dattani, M.T. et al., (2003) Endocrinol Metab 16 (9), 1207-1209
Reconstitution and Storage: For short term use, store at 2-8°C up to 1 week. For long term storage, store at -20°C in small aliquots to prevent freeze-thaw cycles.

Images

WB Suggested Anti-LHX3 Antibody Titration: 1.25 µg/ml
Positive Control: Jurkat cell lysate



Human Lung



Human Heart

Please note: All products are 'FOR RESEARCH USE ONLY. NOT FOR USE IN DIAGNOSTIC OR THERAPEUTIC PROCEDURES'.