

# LHX3 antibody - middle region

Rabbit Polyclonal Antibody

Catalog # AI10542

## Product Information

---

<b>Application</b>	WB
<b>Primary Accession</b>	<a href="#">Q9UBR4-2</a>
<b>Other Accession</b>	<a href="#">NM_014564</a> , <a href="#">NP_055379</a>
<b>Reactivity</b>	Human, Mouse, Rat, Zebrafish, Dog, Bovine
<b>Predicted</b>	Human, Mouse, Rat, Zebrafish, Pig, Chicken, Dog, Bovine
<b>Host</b>	Rabbit
<b>Clonality</b>	Polyclonal
<b>Calculated MW</b>	44 KDa

## Additional Information

---

<b>Alias Symbol</b>	DKFZp762A2013, M2-LHX3, LIM3, CPHD3
<b>Format</b>	Liquid. Purified antibody supplied in 1x PBS buffer with 0.09% (w/v) sodium azide and 2% sucrose.
<b>Reconstitution &amp; Storage</b>	Add 50 ul of distilled water. Final anti-LHX3 antibody concentration is 1 mg/ml in PBS buffer with 2% sucrose. For longer periods of storage, store at 20°C. Avoid repeat freeze-thaw cycles.
<b>Precautions</b>	LHX3 antibody - middle region is for research use only and not for use in diagnostic or therapeutic procedures.

## Protein Information

---

## References

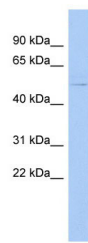
---

Pfaeffle, R.W., (2007) J. Clin. Endocrinol. Metab. 92 (5), 1909-1919 Reconstitution and Storage: For short term use, store at 2-8°C up to 1 week. For long term storage, store at -20°C in small aliquots to prevent freeze-thaw cycles.

## Images

---

WB Suggested Anti-LHX3 Antibody Titration: .2-1 ug/ml  
ELISA Titer: 1:625  
Positive Control: Human Spleen



Please note: All products are 'FOR RESEARCH USE ONLY. NOT FOR USE IN DIAGNOSTIC OR THERAPEUTIC PROCEDURES'.