

NR1I3 antibody - C-terminal region

Rabbit Polyclonal Antibody

Catalog # AI10547

Product Information

Application	WB
Primary Accession	Q5VTW5
Other Accession	NM_005122 , NP_005113
Reactivity	Human, Mouse, Rat, Pig, Dog, Bovine
Predicted	Human, Mouse, Rat, Dog
Host	Rabbit
Clonality	Polyclonal
Calculated MW	40 KDa

Additional Information

Alias Symbol	CAR, CAR-BETA, CAR-SV1, CAR-SV10, CAR-SV11, CAR-SV12, CAR-SV13, CAR-SV14, CAR-SV15, CAR-SV17, CAR-SV18, CAR-SV19, CAR-SV20, CAR-SV21, CAR-SV4, CAR-SV6, CAR-SV7, CAR-SV8, CAR-SV9, CAR1, MB67, MGC97144
Format	Liquid. Purified antibody supplied in 1x PBS buffer with 0.09% (w/v) sodium azide and 2% sucrose.
Reconstitution & Storage	Add 100 ul of distilled water. Final anti-NR1I3 antibody concentration is 1 mg/ml in PBS buffer with 2% sucrose. For longer periods of storage, store at 20°C. Avoid repeat freeze-thaw cycles.
Precautions	NR1I3 antibody - C-terminal region is for research use only and not for use in diagnostic or therapeutic procedures.

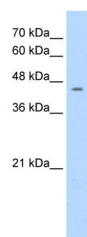
Protein Information

References

Ferguson, S.S., (2005) Mol. Pharmacol. 68 (3), 747-757
Reconstitution and Storage: For short term use, store at 2-8°C up to 1 week. For long term storage, store at -20°C in small aliquots to prevent freeze-thaw cycles.

Images

WB Suggested Anti-NR1I3 Antibody Titration: 1.25 µg/ml
Positive Control: HepG2 cell lysate



Please note: All products are 'FOR RESEARCH USE ONLY. NOT FOR USE IN DIAGNOSTIC OR THERAPEUTIC PROCEDURES'.