

PCSK1 antibody - middle region

Rabbit Polyclonal Antibody

Catalog # AI10567

Product Information

Application	WB, IHC
Primary Accession	P29120
Other Accession	NM_000439 , NP_000430
Reactivity	Human, Mouse, Rat, Dog, Bovine
Predicted	Human, Pig, Dog, Bovine
Host	Rabbit
Clonality	Polyclonal
Calculated MW	84152

Additional Information

Gene ID	5122
Alias Symbol	NEC1, PC1, PC3, SPC3, BMIQ12
Other Names	Neuroendocrine convertase 1, NEC 1, 3.4.21.93, Prohormone convertase 1, Proprotein convertase 1, PC1, PCSK1, NEC1
Format	Liquid. Purified antibody supplied in 1x PBS buffer with 0.09% (w/v) sodium azide and 2% sucrose.
Reconstitution & Storage	Add 50 ul of distilled water. Final anti-PCSK1 antibody concentration is 1 mg/ml in PBS buffer with 2% sucrose. For longer periods of storage, store at 20°C. Avoid repeat freeze-thaw cycles.
Precautions	PCSK1 antibody - middle region is for research use only and not for use in diagnostic or therapeutic procedures.

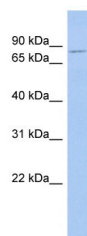
Protein Information

Name	PCSK1
Synonyms	NEC1
Function	Involved in the processing of hormone and other protein precursors at sites comprised of pairs of basic amino acid residues. Substrates include POMC, renin, enkephalin, dynorphin, somatostatin, insulin and AGRP.
Cellular Location	Cytoplasmic vesicle, secretory vesicle. Note=Localized in the secretion granules

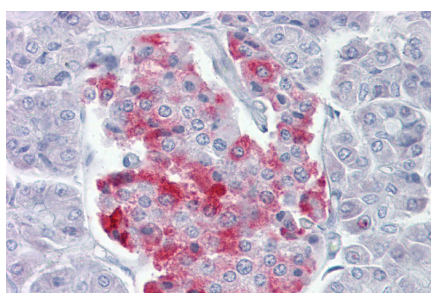
References

Rehfeld,J.F., (2008) Endocrinology 149 (4), 1600-1608 Reconstitution and Storage:For short term use, store at 2-8C up to 1 week. For long term storage, store at -20C in small aliquots to prevent freeze-thaw cycles.

Images



WB Suggested Anti-PCSK1 Antibody Titration: .2-1 ug/ml
ELISA Titer: 1:625
Positive Control: Human Small Intestine



Immunohistochemistry with Pancreas tissue at an antibody concentration of 5ug/ml using anti-PCSK1 antibody (AI1567)

Please note: All products are 'FOR RESEARCH USE ONLY. NOT FOR USE IN DIAGNOSTIC OR THERAPEUTIC PROCEDURES'.