

CTRC antibody - N-terminal region

Rabbit Polyclonal Antibody

Catalog # AI10572

Product Information

Application	WB
Primary Accession	Q99895
Other Accession	NM_007272 , NP_009203
Reactivity	Human, Mouse, Rat, Pig, Dog, Bovine
Predicted	Human, Mouse, Rat, Dog, Bovine
Host	Rabbit
Clonality	Polyclonal
Calculated MW	29484

Additional Information

Gene ID	11330
Alias Symbol	CLCR, ELA4
Other Names	Chymotrypsin-C, 3.4.21.2, Caldecrin, CTRC, CLCR
Format	Liquid. Purified antibody supplied in 1x PBS buffer with 0.09% (w/v) sodium azide and 2% sucrose.
Reconstitution & Storage	Add 50 ul of distilled water. Final anti-CTRC antibody concentration is 1 mg/ml in PBS buffer with 2% sucrose. For longer periods of storage, store at 20°C. Avoid repeat freeze-thaw cycles.
Precautions	CTRC antibody - N-terminal region is for research use only and not for use in diagnostic or therapeutic procedures.

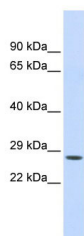
Protein Information

Name	CTRC
Synonyms	CLCR
Function	Regulates activation and degradation of trypsinogens and procarboxypeptidases by targeting specific cleavage sites within their zymogen precursors. Has chymotrypsin-type protease activity and hypocalcemic activity.
Tissue Location	Pancreas.

References

Masson,E., (2008) Hum. Genet. 123 (1), 83-91 Reconstitution and Storage:For short term use, store at 2-8C up to 1 week. For long term storage, store at -20C in small aliquots to prevent freeze-thaw cycles.

Images



WB Suggested Anti-CTRC Antibody Titration: .2-1 ug/ml
ELISA Titer: 1:3125
Positive Control: Human Liver

Please note: All products are 'FOR RESEARCH USE ONLY. NOT FOR USE IN DIAGNOSTIC OR THERAPEUTIC PROCEDURES'.