

# SMPDL3B antibody - N-terminal region

Rabbit Polyclonal Antibody

Catalog # AI10573

## Product Information

---

<b>Application</b>	WB, IHC
<b>Primary Accession</b>	<a href="#">Q92485</a>
<b>Other Accession</b>	<a href="#">NM_014474</a> , <a href="#">NP_055289</a>
<b>Reactivity</b>	Human, Mouse, Rat, Zebrafish, Pig, Dog, Bovine
<b>Predicted</b>	Human, Mouse, Rat, Pig, Chicken, Dog, Bovine
<b>Host</b>	Rabbit
<b>Clonality</b>	Polyclonal
<b>Calculated MW</b>	50814

## Additional Information

---

<b>Gene ID</b>	27293
<b>Alias Symbol</b>	ASML3B
<b>Other Names</b>	Acid sphingomyelinase-like phosphodiesterase 3b, ASM-like phosphodiesterase 3b, 3.1.4.-, SMPDL3B, ASML3B
<b>Format</b>	Liquid. Purified antibody supplied in 1x PBS buffer with 0.09% (w/v) sodium azide and 2% sucrose.
<b>Reconstitution &amp; Storage</b>	Add 50 ul of distilled water. Final anti-SMPDL3B antibody concentration is 1 mg/ml in PBS buffer with 2% sucrose. For longer periods of storage, store at 20°C. Avoid repeat freeze-thaw cycles.
<b>Precautions</b>	SMPDL3B antibody - N-terminal region is for research use only and not for use in diagnostic or therapeutic procedures.

## Protein Information

---

<b>Name</b>	SMPDL3B
<b>Synonyms</b>	ASML3B, ASMLPD
<b>Function</b>	Lipid-modulating phosphodiesterase (PubMed: <a href="#">26095358</a> ). Active on the surface of macrophages and dendritic cells and strongly influences macrophage lipid composition and membrane fluidity. Acts as a negative regulator of Toll-like receptor signaling (By similarity). Has in vitro phosphodiesterase activity, but the physiological substrate is unknown (PubMed: <a href="#">26095358</a> ). Lacks activity with phosphocholine-containing lipids, but can cleave CDP-choline, and can release phosphate from ATP and ADP (in vitro) (By similarity).

## Cellular Location

Secreted. Cell membrane {ECO:0000250|UniProtKB:P58242}; Lipid-anchor, GPI-anchor {ECO:0000250|UniProtKB:P58242}

## References

Strausberg, R.L., et al., (2002) Proc. Natl. Acad. Sci. U.S.A. 99 (26), 16899-16903  
Reconstitution and Storage: For short term use, store at 2-8°C up to 1 week. For long term storage, store at -20°C in small aliquots to prevent freeze-thaw cycles.

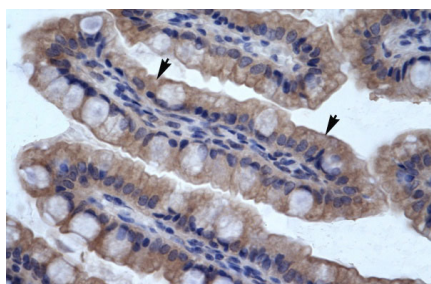
## Images



WB Suggested Anti-SMPDL3B Antibody Titration: .2-1  
ug/ml

Positive Control: Raji cell lysate

SMPDL3B is supported by BioGPS gene expression data  
to be expressed in Raji



Human Intestine

Please note: All products are 'FOR RESEARCH USE ONLY. NOT FOR USE IN DIAGNOSTIC OR THERAPEUTIC PROCEDURES'.