

# KIF13B antibody - N-terminal region

Rabbit Polyclonal Antibody

Catalog # AI10583

## Product Information

---

<b>Application</b>	WB, IHC
<b>Primary Accession</b>	<a href="#">Q9NQT8</a>
<b>Other Accession</b>	<a href="#">NM_015254</a> , <a href="#">NP_056069</a>
<b>Reactivity</b>	Human, Mouse, Rat, Pig, Dog, Bovine
<b>Predicted</b>	Human, Mouse, Rat, Pig, Chicken, Dog, Bovine
<b>Host</b>	Rabbit
<b>Clonality</b>	Polyclonal
<b>Calculated MW</b>	202789

## Additional Information

---

<b>Gene ID</b>	23303
<b>Alias Symbol</b>	GAKIN, KIAA0639
<b>Other Names</b>	Kinesin-like protein KIF13B, Kinesin-like protein GAKIN, KIF13B, GAKIN, KIAA0639
<b>Format</b>	Liquid. Purified antibody supplied in 1x PBS buffer with 0.09% (w/v) sodium azide and 2% sucrose.
<b>Reconstitution &amp; Storage</b>	Add 50 ul of distilled water. Final anti-KIF13B antibody concentration is 1 mg/ml in PBS buffer with 2% sucrose. For longer periods of storage, store at 20°C. Avoid repeat freeze-thaw cycles.
<b>Precautions</b>	KIF13B antibody - N-terminal region is for research use only and not for use in diagnostic or therapeutic procedures.

## Protein Information

---

<b>Name</b>	KIF13B
<b>Synonyms</b>	GAKIN, KIAA0639
<b>Function</b>	Involved in reorganization of the cortical cytoskeleton. Regulates axon formation by promoting the formation of extra axons. May be functionally important for the intracellular trafficking of MAGUKs and associated protein complexes.
<b>Cellular Location</b>	Cytoplasm, cytoskeleton. Cell projection, axon. Note=accumulates at the distal part of the microtubules in the tips of axons, but not of dendrites

## Tissue Location

Ubiquitous.

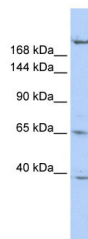
## References

---

Yamada, K.H., (2007) Biochemistry 46 (35), 10039-10045 Reconstitution and Storage: For short term use, store at 2-8°C up to 1 week. For long term storage, store at -20°C in small aliquots to prevent freeze-thaw cycles.

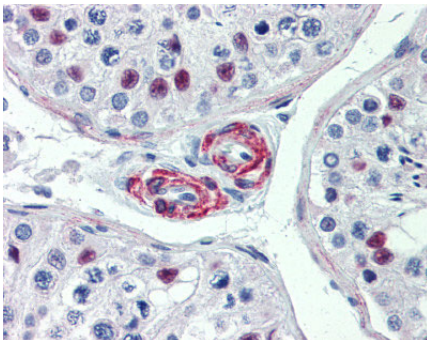
## Images

---

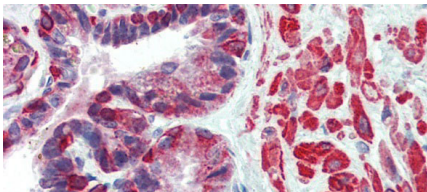


WB Suggested Anti-KIF13B Antibody Titration: 1 µg/ml  
Positive Control: HepG2 cell lysate

KIF13B is supported by BioGPS gene expression data to be expressed in HepG2



Immunohistochemistry with prostate cell lysate tissue at an antibody concentration of 5 µg/ml using anti-KIF13B antibody (AI1583)



Rabbit Anti-KIF13B Antibody  
Catalog Number: arp33926  
Paraffin Embedded Tissue: Human Prostate  
Antibody Concentration: 5 µg/ml

Please note: All products are 'FOR RESEARCH USE ONLY. NOT FOR USE IN DIAGNOSTIC OR THERAPEUTIC PROCEDURES'.