

KIF19 Antibody - N-terminal region

Rabbit Polyclonal Antibody

Catalog # AI10587

Product Information

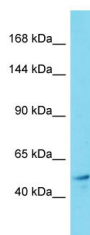
| | |
|--------------------------|---|
| Application | WB |
| Primary Accession | Q2TAC6-3 |
| Other Accession | NM_153209 , NP_694941 |
| Reactivity | Human, Mouse, Rat, Zebrafish, Dog, Bovine |
| Predicted | Human, Mouse, Rat, Zebrafish, Pig, Dog, Bovine |
| Host | Rabbit |
| Clonality | Polyclonal |
| Calculated MW | 55 kDa |

Additional Information

| | |
|-------------------------------------|--|
| Alias Symbol | KIF19A |
| Format | Liquid. Purified antibody supplied in 1x PBS buffer with 0.09% (w/v) sodium azide and 2% sucrose. |
| Reconstitution & Storage | Add 50 ul of distilled water. Final anti-KIF19 antibody concentration is 1 mg/ml in PBS buffer with 2% sucrose. For longer periods of storage, store at 20°C. Avoid repeat freeze-thaw cycles. |
| Precautions | KIF19 Antibody - N-terminal region is for research use only and not for use in diagnostic or therapeutic procedures. |

Protein Information

Images



Host: Rabbit
Target Name: KIF19
Sample Tissue: Thyroid Tumor lysates
Antibody Dilution: 1.ug/ml