

KIF9 antibody - N-terminal region

Rabbit Polyclonal Antibody

Catalog # AI10588

Product Information

| | |
|--------------------------|---|
| Application | WB |
| Primary Accession | Q9HAQ2 |
| Other Accession | NM_182903 , NP_878906 |
| Reactivity | Human, Mouse, Rat, Bovine |
| Predicted | Human, Mouse, Rat, Bovine |
| Host | Rabbit |
| Clonality | Polyclonal |
| Calculated MW | 89986 |

Additional Information

| | |
|-------------------------------------|---|
| Gene ID | 64147 |
| Alias Symbol | MGC104186 |
| Other Names | Kinesin-like protein KIF9, KIF9 |
| Format | Liquid. Purified antibody supplied in 1x PBS buffer with 0.09% (w/v) sodium azide and 2% sucrose. |
| Reconstitution & Storage | Add 50 ul of distilled water. Final anti-KIF9 antibody concentration is 1 mg/ml in PBS buffer with 2% sucrose. For longer periods of storage, store at 20°C. Avoid repeat freeze-thaw cycles. |
| Precautions | KIF9 antibody - N-terminal region is for research use only and not for use in diagnostic or therapeutic procedures. |

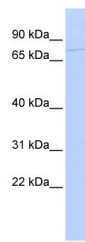
Protein Information

| | |
|--------------------------|--|
| Name | KIF9 |
| Function | Essential for normal male fertility and for progressive motility of spermatozoa. |
| Cellular Location | Cytoplasm, cytoskeleton. Cell projection, cilium, flagellum {ECO:0000250 UniProtKB:Q9WV04} Cytoplasm, cytoskeleton, flagellum axoneme {ECO:0000250 UniProtKB:Q9WV04} |

References

Piddini,E., (2001) EMBO J. 20 (15), 4076-4087 Reconstitution and Storage:For short term use, store at 2-8C up to 1 week. For long term storage, store at -20C in small aliquots to prevent freeze-thaw cycles.

Images



WB Suggested Anti-KIF9 Antibody Titration: .2-1 ug/ml
ELISA Titer: 1:15625
Positive Control: MCF7 cell lysate

Please note: All products are 'FOR RESEARCH USE ONLY. NOT FOR USE IN DIAGNOSTIC OR THERAPEUTIC PROCEDURES'.