

# KIF2A antibody - C-terminal region

Rabbit Polyclonal Antibody

Catalog # AI10597

## Product Information

---

|                          |   |
|--------------------------|---|
| <b>Application</b>       | WB  |
| <b>Primary Accession</b> | <a href="#">O00139</a>                                |
| <b>Other Accession</b>   | <a href="#">NM_004520</a> , <a href="#">NP_004511</a> |
| <b>Reactivity</b>        | Human, Mouse, Rat, Zebrafish, Dog, Bovine             |
| <b>Predicted</b>         | Human, Mouse, Rat, Chicken, Dog, Bovine               |
| <b>Host</b>              | Rabbit  |
| <b>Clonality</b>         | Polyclonal  |
| <b>Calculated MW</b>     | 79955   |

## Additional Information

---

|                                     |  |
|-------------------------------------|--|
| <b>Gene ID</b>                      | 3796   |
| <b>Alias Symbol</b>                 | HK2, KIF2  |
| <b>Other Names</b>                  | Kinesin-like protein KIF2A, Kinesin-2, hK2, KIF2A, KIF2, KNS2  |
| <b>Format</b>                       | Liquid. Purified antibody supplied in 1x PBS buffer with 0.09% (w/v) sodium azide and 2% sucrose.  |
| <b>Reconstitution &amp; Storage</b> | Add 50 ul of distilled water. Final anti-KIF2A antibody concentration is 1 mg/ml in PBS buffer with 2% sucrose. For longer periods of storage, store at 20°C. Avoid repeat freeze-thaw cycles. |
| <b>Precautions</b>                  | KIF2A antibody - C-terminal region is for research use only and not for use in diagnostic or therapeutic procedures.   |

## Protein Information

---

|                          |   |
|--------------------------|---|
| <b>Name</b>              | KIF2A   |
| <b>Synonyms</b>          | KIF2, KNS2  |
| <b>Function</b>          | Plus end-directed microtubule-dependent motor required for normal brain development. May regulate microtubule dynamics during axonal growth. Required for normal progression through mitosis. Required for normal congress of chromosomes at the metaphase plate. Required for normal spindle dynamics during mitosis. Promotes spindle turnover. Implicated in formation of bipolar mitotic spindles. Has microtubule depolymerization activity. |
| <b>Cellular Location</b> | Cytoplasm. Cytoplasm, cytoskeleton, microtubule organizing center,  |

centrosome. Cytoplasm, cytoskeleton, spindle pole. Cytoplasm, cytoskeleton, spindle. Note=Localized to the spindle microtubules and spindle poles from prophase to metaphase. Efficient targeting to spindle microtubules and spindle poles requires the kinase activity of PLK1. Recruited to mitotic spindles by interaction with PSRC1

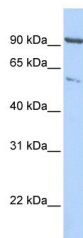
## References

---

Jang,C.Y., (2008) J. Cell Biol. 181 (2), 255-267 Reconstitution and Storage:For short term use, store at 2-8C up to 1 week. For long term storage, store at -20C in small aliquots to prevent freeze-thaw cycles.

## Images

---



WB Suggested Anti-KIF2A Antibody Titration: .2-1 ug/ml  
Positive Control: HepG2 cell lysate

Please note: All products are 'FOR RESEARCH USE ONLY. NOT FOR USE IN DIAGNOSTIC OR THERAPEUTIC PROCEDURES'.