

RGS6 antibody - C-terminal region

Rabbit Polyclonal Antibody

Catalog # AI10600

Product Information

Application	WB, IHC
Primary Accession	P49758-4
Other Accession	NM_004296 , NP_004287
Reactivity	Human, Mouse, Rat, Zebrafish, Dog, Bovine
Predicted	Human, Mouse, Rat, Zebrafish, Chicken, Dog, Bovine
Host	Rabbit
Clonality	Polyclonal
Calculated MW	54 KDa

Additional Information

Alias Symbol	GAP
Format	Liquid. Purified antibody supplied in 1x PBS buffer with 0.09% (w/v) sodium azide and 2% sucrose.
Reconstitution & Storage	Add 50 ul of distilled water. Final anti-RGS6 antibody concentration is 1 mg/ml in PBS buffer with 2% sucrose. For longer periods of storage, store at 20°C. Avoid repeat freeze-thaw cycles.
Precautions	RGS6 antibody - C-terminal region is for research use only and not for use in diagnostic or therapeutic procedures.

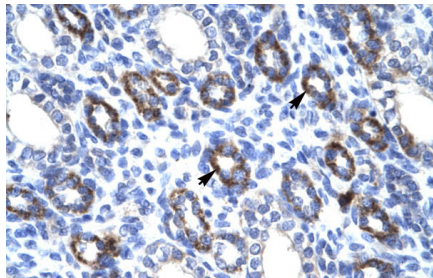
Protein Information

References

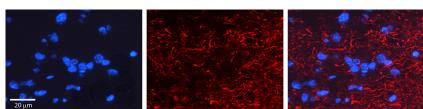
Liu,Z. et al., (2004) J. Biol. Chem. 279 (14), 14120-14128
Reconstitution and Storage: For short term use, store at 2-8°C up to 1 week. For long term storage, store at -20°C in small aliquots to prevent freeze-thaw cycles.

Images

WB Suggested Anti-RGS6 Antibody Titration: .2-1 ug/ml
Positive Control: Jurkat cell lysate



Human kidney



RGS6 antibody - C-terminal region (AI16)
 Catalog Number: AI16
 Formalin Fixed Paraffin Embedded Tissue: Human Pineal Tissue
 Observed Staining: Cytoplasm and Membrane of Human Pineal Tissue
 Primary Antibody Concentration: 1:1
 Other Working Concentrations: 1/6
 Secondary Antibody: Donkey anti-Rabbit-Cy3
 Secondary Antibody Concentration: 1:2
 Magnification: 2X
 Exposure Time: .5 - 2. sec

Please note: All products are 'FOR RESEARCH USE ONLY. NOT FOR USE IN DIAGNOSTIC OR THERAPEUTIC PROCEDURES'.