

TCFL1 antibody - middle region

Rabbit Polyclonal Antibody

Catalog # AI10603

Product Information

Application	WB
Primary Accession	Q15906
Other Accession	NM_005997 , NP_005988
Reactivity	Human, Mouse, Rat, Zebrafish, Pig, Dog, Bovine
Predicted	Human, Mouse, Rat, Zebrafish, Dog, Bovine
Host	Rabbit
Clonality	Polyclonal
Calculated MW	40594

Additional Information

Gene ID	6944
Alias Symbol	YL1, CFL1, Swc2, YL-1, TCFL1
Other Names	Vacuolar protein sorting-associated protein 72 homolog, Protein YL-1, Transcription factor-like 1, VPS72, TCFL1, YL1
Format	Liquid. Purified antibody supplied in 1x PBS buffer with 0.09% (w/v) sodium azide and 2% sucrose.
Reconstitution & Storage	Add 50 ul of distilled water. Final anti-TCFL1 antibody concentration is 1 mg/ml in PBS buffer with 2% sucrose. For longer periods of storage, store at 20°C. Avoid repeat freeze-thaw cycles.
Precautions	TCFL1 antibody - middle region is for research use only and not for use in diagnostic or therapeutic procedures.

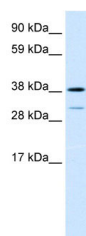
Protein Information

Name	VPS72
Synonyms	TCFL1, YL1
Function	Deposition-and-exchange histone chaperone specific for H2AZ1, specifically chaperones H2AZ1 and deposits it into nucleosomes. As component of the SRCAP complex, mediates the ATP-dependent exchange of histone H2AZ1/H2B dimers for nucleosomal H2A/H2B, leading to transcriptional regulation of selected genes by chromatin remodeling.
Cellular Location	Nucleus.

References

Horikawa,I., et al., (1995) Oshimura,M. Biochem. Biophys. Res. Commun. 208 (3), 999-1007
Reconstitution and Storage: For short term use, store at 2-8C up to 1 week. For long term storage, store at -20C in small aliquots to prevent freeze-thaw cycles.

Images



WB Suggested Anti-TCFL1 Antibody Titration: .6ug/ml
Positive Control: Human Lung

Please note: All products are 'FOR RESEARCH USE ONLY. NOT FOR USE IN DIAGNOSTIC OR THERAPEUTIC PROCEDURES'.