

FLJ37300 antibody - N-terminal region

Rabbit Polyclonal Antibody

Catalog # AI10606

Product Information

Application	WB
Primary Accession	Q8N1X8
Other Accession	NM_153209 , NP_694941
Reactivity	Human, Mouse, Rat, Zebrafish, Dog, Bovine
Predicted	Human, Rat, Bovine
Host	Rabbit
Clonality	Polyclonal
Calculated MW	62 KDa

Additional Information

Alias Symbol	KIF19A, FLJ37300
Format	Liquid. Purified antibody supplied in 1x PBS buffer with 0.09% (w/v) sodium azide and 2% sucrose.
Reconstitution & Storage	Add 50 ul of distilled water. Final anti-FLJ37300 antibody concentration is 1 mg/ml in PBS buffer with 2% sucrose. For longer periods of storage, store at 20°C. Avoid repeat freeze-thaw cycles.
Precautions	FLJ37300 antibody - N-terminal region is for research use only and not for use in diagnostic or therapeutic procedures.

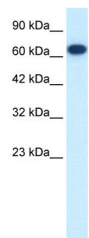
Protein Information

References

Ota,T., et al., (2004) Nat. Genet. 36 (1), 40-45
Reconstitution and Storage: For short term use, store at 2-8C up to 1 week. For long term storage, store at -20C in small aliquots to prevent freeze-thaw cycles.

Images

WB Suggested Anti-FLJ373 Antibody Titration: .125ug/ml
Positive Control: Jurkat cell lysate



Please note: All products are 'FOR RESEARCH USE ONLY. NOT FOR USE IN DIAGNOSTIC OR THERAPEUTIC PROCEDURES'.