

CXorf6 antibody - N-terminal region

Rabbit Polyclonal Antibody

Catalog # AI10619

Product Information

Application	WB
Primary Accession	Q13495
Other Accession	NM_005491 , NP_005482
Reactivity	Human, Mouse, Rat, Zebrafish, Pig, Dog, Bovine
Predicted	Human, Mouse, Dog, Bovine
Host	Rabbit
Clonality	Polyclonal
Calculated MW	83231

Additional Information

Gene ID	10046
Alias Symbol	CG1, F18, HYSP2, CXorf6
Other Names	Mastermind-like domain-containing protein 1, F18, Protein CG1, MAMLD1, CG1, CXorf6
Format	Liquid. Purified antibody supplied in 1x PBS buffer with 0.09% (w/v) sodium azide and 2% sucrose.
Reconstitution & Storage	Add 50 ul of distilled water. Final anti-CXorf6 antibody concentration is 1 mg/ml in PBS buffer with 2% sucrose. For longer periods of storage, store at 20°C. Avoid repeat freeze-thaw cycles.
Precautions	CXorf6 antibody - N-terminal region is for research use only and not for use in diagnostic or therapeutic procedures.

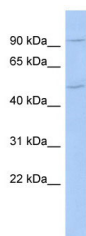
Protein Information

Name	MAMLD1
Synonyms	CG1, CXorf6
Function	Transactivates the HES3 promoter independently of NOTCH proteins. HES3 is a non-canonical NOTCH target gene which lacks binding sites for RBPJ.
Cellular Location	Nucleus. Note=Punctate nuclear localization
Tissue Location	Expressed in fetal brain, fetal ovary and fetal testis. Expressed in adult brain, ovary, skin, testis, uterus. Highly expressed in skeletal muscle.

References

Fukami,M., (2008) J. Biol. Chem. 283 (9), 5525-5532 Reconstitution and Storage:For short term use, store at 2-8C up to 1 week. For long term storage, store at -20C in small aliquots to prevent freeze-thaw cycles.

Images



WB Suggested Anti-CXorf6 Antibody Titration: .2-1 ug/ml
ELISA Titer: 1:625
Positive Control: COLO25 cell lysate

Please note: All products are 'FOR RESEARCH USE ONLY. NOT FOR USE IN DIAGNOSTIC OR THERAPEUTIC PROCEDURES'.