

# CCT4 antibody - C-terminal region

Rabbit Polyclonal Antibody

Catalog # AI10622

## Product Information

---

<b>Application</b>	WB, IHC
<b>Primary Accession</b>	<a href="#">Q53QP9</a>
<b>Other Accession</b>	<a href="#">NM_006430</a> , <a href="#">NP_006421</a>
<b>Reactivity</b>	Human, Mouse, Rat, Zebrafish, Pig, Dog, Bovine, Yeast
<b>Predicted</b>	Human, Mouse, Zebrafish, Chicken, Dog, Bovine
<b>Host</b>	Rabbit
<b>Clonality</b>	Polyclonal
<b>Calculated MW</b>	58 KDa

## Additional Information

---

<b>Alias Symbol</b>	SRB, Cctd, CCT-DELTA
<b>Format</b>	Liquid. Purified antibody supplied in 1x PBS buffer with 0.09% (w/v) sodium azide and 2% sucrose.
<b>Reconstitution &amp; Storage</b>	Add 100 ul of distilled water. Final anti-CCT4 antibody concentration is 1 mg/ml in PBS buffer with 2% sucrose. For longer periods of storage, store at 20°C. Avoid repeat freeze-thaw cycles.
<b>Precautions</b>	CCT4 antibody - C-terminal region is for research use only and not for use in diagnostic or therapeutic procedures.

## Protein Information

---

## References

---

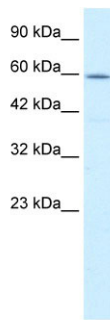
Kimura,K., et al., (2006) Genome Res. 16 (1), 55-65  
Reconstitution and Storage: For short term use, store at 2-8C up to 1 week. For long term storage, store at -20C in small aliquots to prevent freeze-thaw cycles.

## Images

---

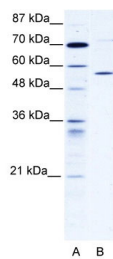
WB Suggested Anti-CCT4 Antibody Titration: .2-1  
ug/ml  
ELISA Titer: 1:3125  
Positive Control: HepG2 cell lysate

CCT4 is supported by BioGPS gene expression data to be expressed in HepG2

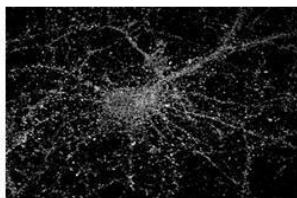


CCT4 antibody - C-terminal region (AI1622) validated by WB using 293T cells lysate

CCT4 is supported by BioGPS gene expression data to be expressed in HEK293T



**CCT4**



**White: CCT4**

See IHC 1 Data and Customer Feedback for more Information

Sample Type :Rat Hippocampal Neurons - 14DIVPrimary Antibody Dilution :1:2Secondary Antibody :Anti-rabbit-Cy3Secondary Antibody Dilution :1:5Color/Signal Descriptions :White: CCT4Gene Name :CCT4Submitted by :Dan Fowler - University of Oregon, Institute of Neuroscience

Please note: All products are 'FOR RESEARCH USE ONLY. NOT FOR USE IN DIAGNOSTIC OR THERAPEUTIC PROCEDURES'.