

ENO1 antibody - C-terminal region

Rabbit Polyclonal Antibody

Catalog # AI10640

Product Information

Application	WB, IHC
Primary Accession	Q53HR3
Other Accession	NM_001428 , NP_001419
Reactivity	Human, Mouse, Rat, Zebrafish, Dog, Bovine, Yeast
Predicted	Human, Mouse, Rat, Zebrafish, Chicken, Dog
Host	Rabbit
Clonality	Polyclonal
Calculated MW	47 KDa

Additional Information

Alias Symbol	NNE, PPH, MPB1, ENO1L1
Format	Liquid. Purified antibody supplied in 1x PBS buffer with 0.09% (w/v) sodium azide and 2% sucrose.
Reconstitution & Storage	Add 100 ul of distilled water. Final anti-ENO1 antibody concentration is 1 mg/ml in PBS buffer with 2% sucrose. For longer periods of storage, store at 20°C. Avoid repeat freeze-thaw cycles.
Precautions	ENO1 antibody - C-terminal region is for research use only and not for use in diagnostic or therapeutic procedures.

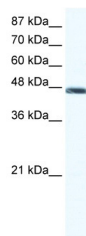
Protein Information

References

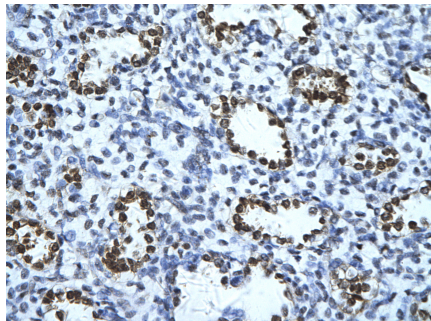
Ghosh,A.K., et al., (2005) J. Biol. Chem. 280 (14), 14325-14330
Reconstitution and Storage: For short term use, store at 2-8C up to 1 week. For long term storage, store at -20C in small aliquots to prevent freeze-thaw cycles.
Publications: Rambaruth, N. D. S., Greenwell, P. & Dwek, M. V. The lectin Helix pomatia agglutinin recognizes O-GlcNAc containing glycoproteins in human breast cancer. Glycobiology 22, 839-48 (2012).
IP, Human, Guinea pig, Horse, Rabbit, Rat, Sheep, Bovine, Dog, Mouse, Yeast, Zebrafish 22322011

Images

WB Suggested Anti-ENO1 Antibody Titration: 1.25ug/ml
ELISA Titer: 1:625
Positive Control: Jurkat cell lysate



ENO1 is strongly supported by BioGPS gene expression data to be expressed in Human Jurkat cells



Rabbit Anti-ENO1 Antibody
Catalog Number: AI10640
Paraffin Embedded Tissue: Human alveolar cell
Cellular Data: Epithelial cells of renal tubule
Antibody Concentration: 4.-8. ug/ml
Magnification: 4X

Please note: All products are 'FOR RESEARCH USE ONLY. NOT FOR USE IN DIAGNOSTIC OR THERAPEUTIC PROCEDURES'.