

PRICKLE3 antibody - C-terminal region

Rabbit Polyclonal Antibody

Catalog # AI10642

Product Information

Application	WB
Primary Accession	O43900
Other Accession	NM_006150 , NP_006141
Reactivity	Human, Mouse, Rat, Pig, Dog
Predicted	Human, Mouse, Rat, Pig
Host	Rabbit
Clonality	Polyclonal
Calculated MW	68609

Additional Information

Gene ID	4007
Alias Symbol	LMO6
Other Names	Prickle-like protein 3, LIM domain only protein 6, LMO-6, Triple LIM domain protein 6, PRICKLE3, LMO6
Format	Liquid. Purified antibody supplied in 1x PBS buffer with 0.09% (w/v) sodium azide and 2% sucrose.
Reconstitution & Storage	Add 50 ul of distilled water. Final anti-PRICKLE3 antibody concentration is 1 mg/ml in PBS buffer with 2% sucrose. For longer periods of storage, store at 20°C. Avoid repeat freeze-thaw cycles.
Precautions	PRICKLE3 antibody - C-terminal region is for research use only and not for use in diagnostic or therapeutic procedures.

Protein Information

Name	PRICKLE3 (HGNC:6645)
Synonyms	LMO6
Function	Involved in the planar cell polarity (PCP) pathway that is essential for the polarization of epithelial cells during morphogenetic processes, including gastrulation and neurulation (By similarity). PCP is maintained by two molecular modules, the global and the core modules, PRICKLE3 being part of the core module (By similarity). Distinct complexes of the core module segregate to opposite sides of the cell, where they interact with the opposite complex in the neighboring cell at or near the adherents junctions (By similarity). Involved in the organization of the basal body (By similarity).

Involved in cilia growth and positioning (By similarity). Required for proper assembly, stability, and function of mitochondrial membrane ATP synthase (mitochondrial complex V) (PubMed:[32516135](#)).

Cellular Location

Cytoplasm {ECO:0000250|UniProtKB:A8WH69, ECO:0000269|PubMed:32516135}. Cell membrane {ECO:0000250|UniProtKB:A8WH69}; Peripheral membrane protein {ECO:0000250|UniProtKB:A8WH69}; Cytoplasmic side {ECO:0000250|UniProtKB:A8WH69}. Mitochondrion. Note=Recruited by VANG2 to anterior cell borders. This polarity is controlled by Wnt proteins (By similarity). WTIP is involved in the recruitment of PRICKLE3 to the basal body (By similarity). {ECO:0000250|UniProtKB:A8WH69}

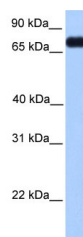
Tissue Location

Widely expressed.

References

Olsen,J.V., (2006) Cell 127 (3), 635-648 Reconstitution and Storage:For short term use, store at 2-8C up to 1 week. For long term storage, store at -20C in small aliquots to prevent freeze-thaw cycles.

Images



WB Suggested Anti-PRICKLE3 Antibody Titration: .2-1 ug/ml
Positive Control: Transfected 293T

Please note: All products are 'FOR RESEARCH USE ONLY. NOT FOR USE IN DIAGNOSTIC OR THERAPEUTIC PROCEDURES'.