

# PCGF3 antibody - middle region

Rabbit Polyclonal Antibody

Catalog # AI10644

## Product Information

Application	WB
Primary Accession	<a href="#">Q3KNV8</a>
Other Accession	<a href="#">NM_006315</a> , <a href="#">NP_006306</a>
Reactivity	Human, Mouse, Rat, Pig, Dog, Bovine
Predicted	Human, Mouse, Rat, Chicken, Dog, Bovine
Host	Rabbit
Clonality	Polyclonal
Calculated MW	28115

## Additional Information

Gene ID	10336
Alias Symbol	RNF3, DONG1, RNF3A
Other Names	Polycomb group RING finger protein 3, RING finger protein 3A, PCGF3, RNF3, RNF3A
Format	Liquid. Purified antibody supplied in 1x PBS buffer with 0.09% (w/v) sodium azide and 2% sucrose.
Reconstitution & Storage	Add 50 ul of distilled water. Final anti-PCGF3 antibody concentration is 1 mg/ml in PBS buffer with 2% sucrose. For longer periods of storage, store at 20°C. Avoid repeat freeze-thaw cycles.
Precautions	PCGF3 antibody - middle region is for research use only and not for use in diagnostic or therapeutic procedures.

## Protein Information

Name	PCGF3
Synonyms	RNF3, RNF3A
Function	Component of a Polycomb group (PcG) multiprotein PRC1-like complex, a complex class required to maintain the transcriptionally repressive state of many genes, including Hox genes, throughout development. PcG PRC1 complex acts via chromatin remodeling and modification of histones; it mediates monoubiquitination of histone H2A 'Lys-119', rendering chromatin heritably changed in its expressibility. Within the PRC1-like complex, regulates RNF2 ubiquitin ligase activity (PubMed: <a href="#">26151332</a> ). Plays a redundant role with PCGF5 as part of a PRC1-like complex that mediates monoubiquitination of

histone H2A 'Lys-119' on the X chromosome and is required for normal silencing of one copy of the X chromosome in XX females (By similarity).

## Cellular Location

Nucleus. Nucleus, nucleoplasm {ECO:0000250|UniProtKB:Q8BTQ0}.  
Note=Recruited by the non- coding RNA Xist to specific nuclear foci that probably correspond to the inactivated X chromosome.  
{ECO:0000250|UniProtKB:Q8BTQ0}

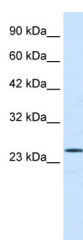
## References

---

Ota,T., et al., (2004) Nat. Genet. 36 (1), 40-45  
Reconstitution and Storage:For short term use, store at 2-8C up to 1 week. For long term storage, store at -20C in small aliquots to prevent freeze-thaw cycles.

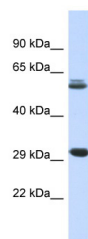
## Images

---



WB Suggested Anti-PCGF3 Antibody Titration: .125ug/ml  
ELISA Titer: 1:125  
Positive Control: Raji cell lysate

PCGF3 is strongly supported by BioGPS gene expression data to be expressed in Human Raji cells



Host:Rabbit  
Target Name:PCGF3  
Sample Tissue: Fetal Muscle lysates  
Antibody Dilution:1.ug/ml

Please note: All products are 'FOR RESEARCH USE ONLY. NOT FOR USE IN DIAGNOSTIC OR THERAPEUTIC PROCEDURES'.