

Trim35 Antibody - middle region

Rabbit Polyclonal Antibody

Catalog # AI10646

Product Information

Application	WB
Primary Accession	Q8C006
Other Accession	NM_029979 , NP_084255
Reactivity	Human, Mouse, Rat, Pig, Dog, Bovine
Predicted	Human, Mouse, Rat, Pig, Dog, Bovine
Host	Rabbit
Clonality	Polyclonal
Calculated MW	57345

Additional Information

Gene ID	66854
Alias Symbol Other Names	0710005M05Rik, A430106H13Rik, AW046487, HLS5, Mair, NC8, mKIAA1098 Tripartite motif-containing protein 35, Hemopoietic lineage switch protein 5, Macrophage-derived apoptosis-inducing RBCC protein, Protein MAIR, Protein Nc8, Trim35, Hls5, Kiaa1098, Mair
Format	Liquid. Purified antibody supplied in 1x PBS buffer with 0.09% (w/v) sodium azide and 2% sucrose.
Reconstitution & Storage	Add 50 μ l of distilled water. Final Anti-Trim35 antibody concentration is 1 mg/ml in PBS buffer with 2% sucrose. For longer periods of storage, store at -20°C. Avoid repeat freeze-thaw cycles.
Precautions	Trim35 Antibody - middle region is for research use only and not for use in diagnostic or therapeutic procedures.

Protein Information

Name	Trim35
Synonyms	Hls5, Kiaa1098, Mair
Function	E3 ubiquitin-protein ligase that participates in multiple biological processes including cell death, glucose metabolism, and in particular, the innate immune response (By similarity) (PubMed: 32562145). Mediates 'Lys-63'-linked polyubiquitination of TRAF3 thereby promoting type I interferon production via RIG-I signaling pathway. Can also catalyze 'Lys-48'-linked polyubiquitination and proteasomal degradation of viral proteins such as influenza virus PB2. Acts as a negative feedback regulator of TLR7- and

TLR9-triggered signaling. Mechanistically, promotes the 'Lys-48'-linked ubiquitination of IRF7 and induces its degradation via a proteasome-dependent pathway. Reduces FGFR1-dependent tyrosine phosphorylation of PKM, inhibiting PKM-dependent lactate production, glucose metabolism, and cell growth (By similarity).

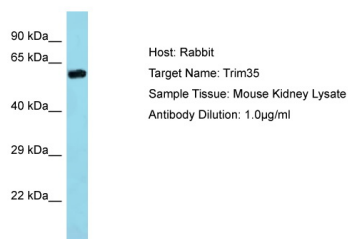
Cellular Location

Cytoplasm. Nucleus. Note=Found predominantly in cytoplasm with a granular distribution Found in punctuate nuclear bodies in transfected COS and HeLa cells

Tissue Location

Widely expressed. Highly expressed in brain, heart, kidney, spleen, skeletal muscle, lung and thymus. Lower expression found in stomach, large intestine and bone marrow

Images



Host:Rabbit
Target Name:Trim35
Sample Tissue: Mouse Kidney lysates
Antibody Dilution:1.ug/ml

Please note: All products are 'FOR RESEARCH USE ONLY. NOT FOR USE IN DIAGNOSTIC OR THERAPEUTIC PROCEDURES'.